

Portfolio




3DSDS
3D Structural Detailing Services Limited



THE CONTENT

About us	03
Our Services & Software	04
Stages of Work	05
Detailing Services & Workflow	06
What will I get for my money?	07
Examples of Work	08
What else do we offer?	37
Testimonials	38
Contact us	39

ABOUT US

3DSDS was founded by Teresa Benson-Shettle in 2018, and the main mission was to provide affordable professional services to the Construction Industry. Having been in the construction industry for over 25 years with experience using AutoCAD, Advance Steel, Revit, Creo Elements, FreeCAD, SolidWorks, Draftsight 2D and SketchUp and many more.

3DSDS uses the latest AUTODESK Software and has experience in producing 2D Drafting, 3D Drafting and Modelling, Structural Detailing, Range Design to JSP 403 & Planning Drawings. Teresa also worked at Graitec UK in the past developing, teaching and supporting AutoCAD and Advance Steel.

In her years as a Structural Technician and Project Engineer she has worked on various projects for construction that have been located all around the world, these included the following:

3D Printed Projects, Balconies, Bespoke Metalwork (Cage Units, Chairs, Park Benches, Shelving Units, Tables), Fire Escape Staircases (Spiral and Straight), Mezzanine Floors, Portal Frame Structures, Residential and Commercial Steelwork, Sheet Metal Work, Shooting Ranges (MOD), Timber Frame Structures & Telecommunication Towers.

When Teresa started the Company, her vision was to provide a professional affordable service for the Steel Industry and work closely with clients to produce their designs as a 3D model.

3DSDS will firstly produce drawings for approval from the created 3D model and the provided information, once approved we will complete the project and issue all the necessary documentation and drawings for fabrication, if required we can work in collaboration with your appointed Chartered Structural Engineer to create the recommended Steel Connections for your project.



SERVICES

- ▲ 2D Drafting Services
- ▲ 3D Modeling & Detailing Drafting Services
- ▲ 3D Prototype Printing
- ▲ CAD Training –AutoCAD & Advance Steel
- ▲ Technical Support – AutoCAD & Advance Steel
- ▲ Printing Services – A1, A2, A3 & A4
- ▲ Conversion to CAD – PDFs and Image Files to CAD
- ▲ Landscape Design
- ▲ Rendered Visuals & Videos
- ▲ Engraving Services

SOFTWARE

- ▲ AutoCAD 2024 to 2026
- ▲ Advance Steel 2024 to 2026
- ▲ Revit 2024 to 2026
- ▲ Twinmotion

STAGES OF WORK

STEP 1

Clients request a Quotation from provided information

STEP 2

On accepted, Invoice sent with a maximum of a 2 Staged Payment Schedule

STEP 3

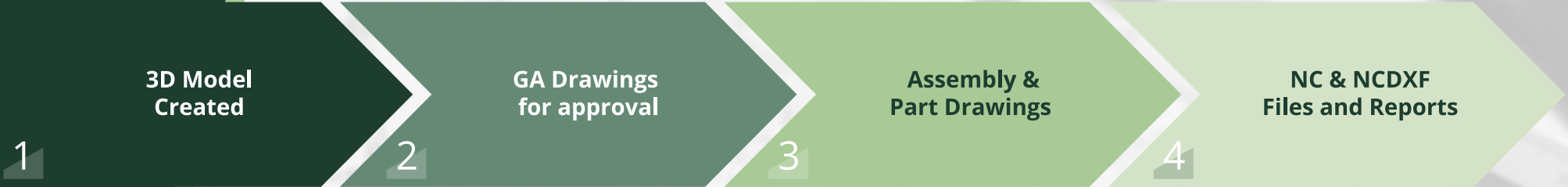
Start Project, Once 3D model is created an Online link to a 3D Viewer is provided and GAs for Approval are sent, GAs Include: Plans, Isometrics and Elevations

STEP 4

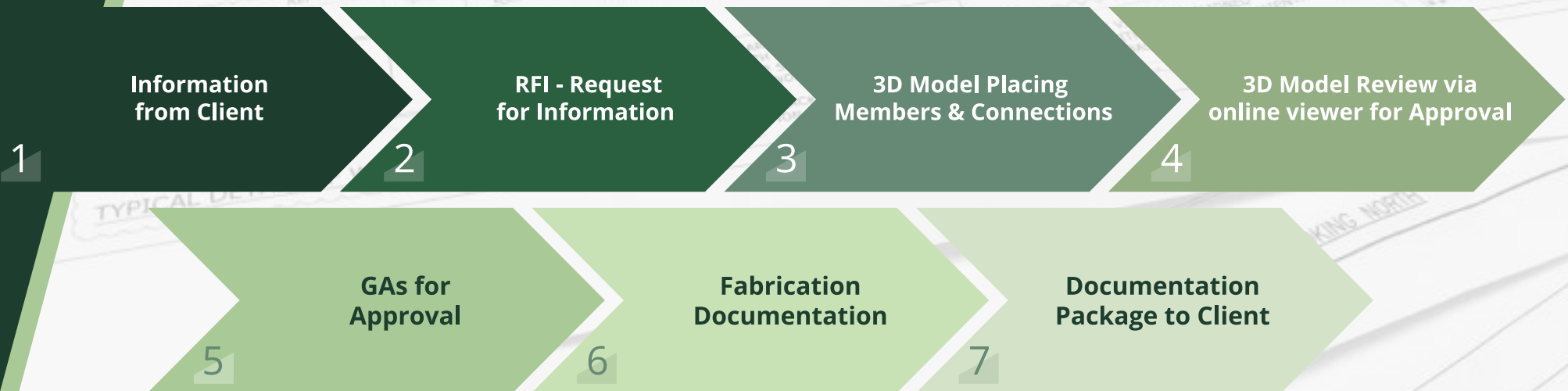
Once GAs are Approved the Fabrication Package is started
Fabrication Pack Includes: GAs, BOMs (Bill of Materials), Assemblies, Single Parts, NC & NCDXF Files (For CNC Machine)

ALL GENERATED WITH YOUR LOGO IDENTIFYING YOU AS THE OWNER ON ALL INFORMATION

DETAILING SERVICES



WORKFLOW



ALL GENERATED WITH YOUR LOGO IDENTIFYING YOU AS THE OWNER ON ALL INFORMATION

WHAT WILL I GET FOR MY MONEY?

The Fabrication Pack includes the following information:

- ▲ GAs (*PDF format*)
- ▲ Assemblies (*PDF format*)
- ▲ Single Parts (*PDF format*)
- ▲ NC & NCDXF (*.ncFormat & .nc.dxf format*)
- ▲ BOMs (*Bill of Materials*) Bolt List, Material List, Assembly List, Loading List.

WE WORK FOR

- ▲ Structural Engineering Consultants
- ▲ Fabricators
- ▲ Architectural Firms

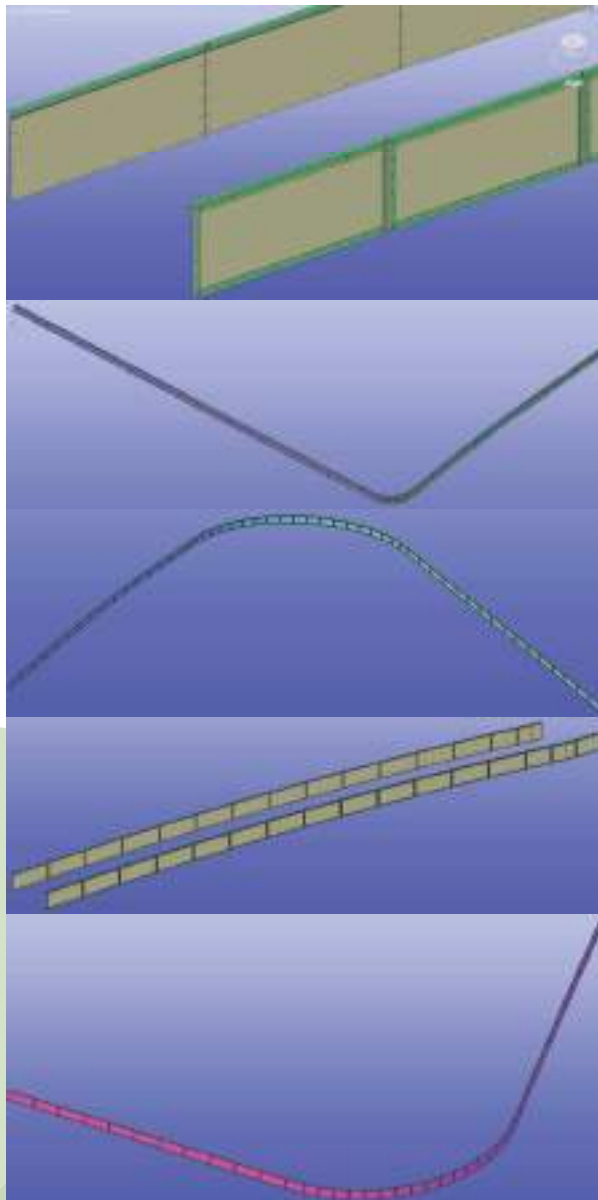


EXAMPLES OF WORK

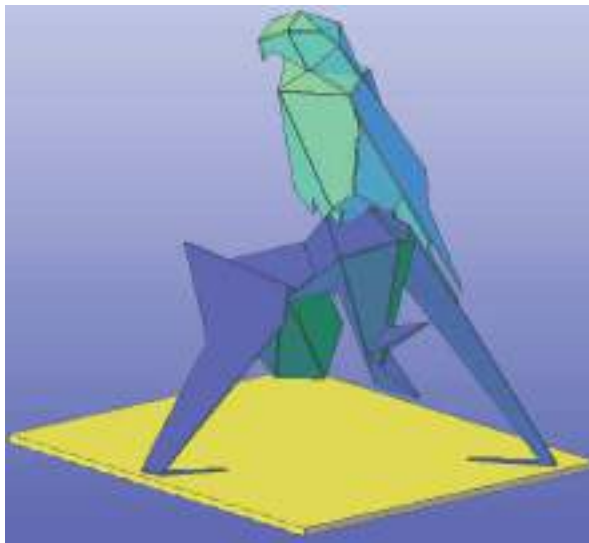
Crafting Steel with Technology

A FEW PROJECTS TO START

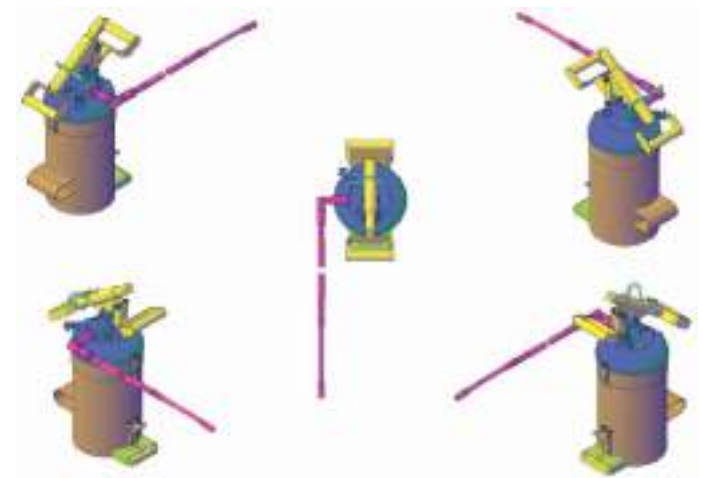
BRIDGE HANDRAILING



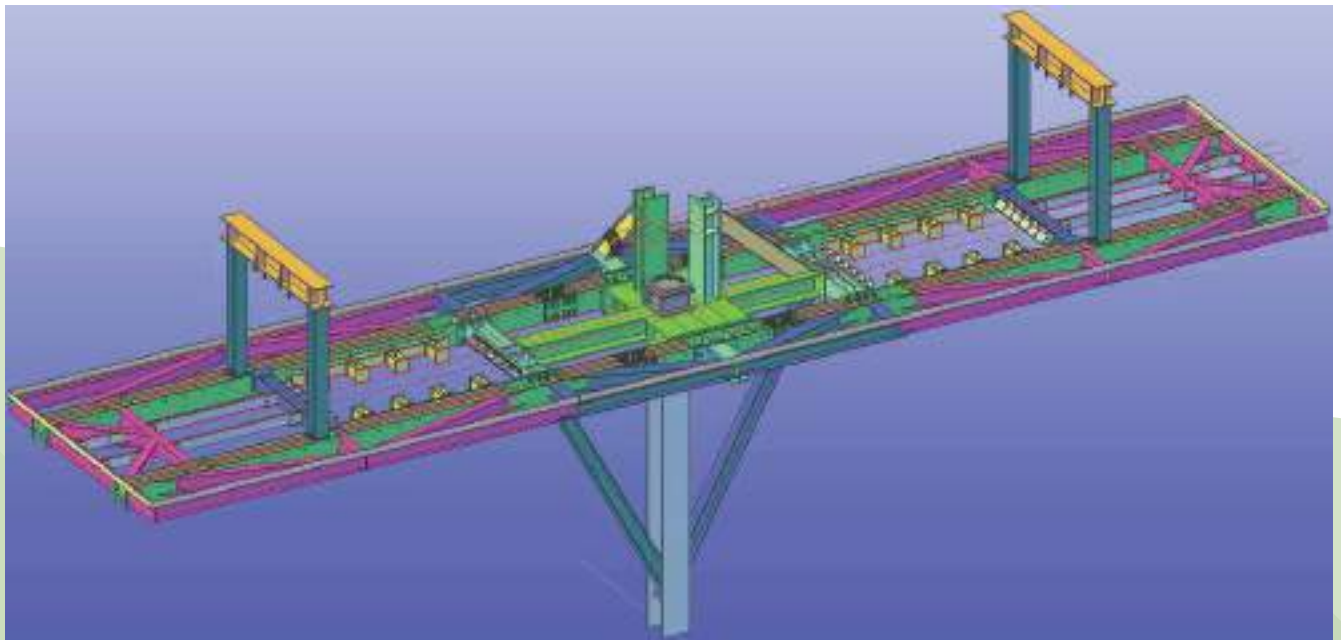
ABSTRACT SCULPTURE



LUBRICATING GREASE POT



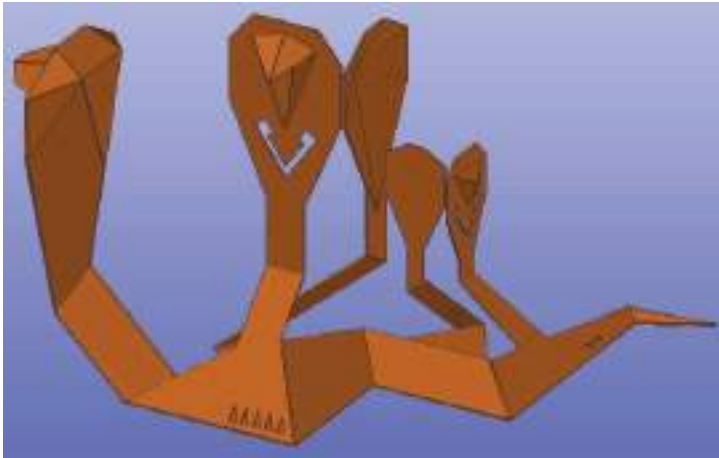
BRIDGE INSPECTION PLATFORM



ABSTRACT SCULPTURES

Given 5mm Foam Board Models to create these sculptures from and then generated the fabrication documentation.
This proves Advance Steel can be used for many different things.

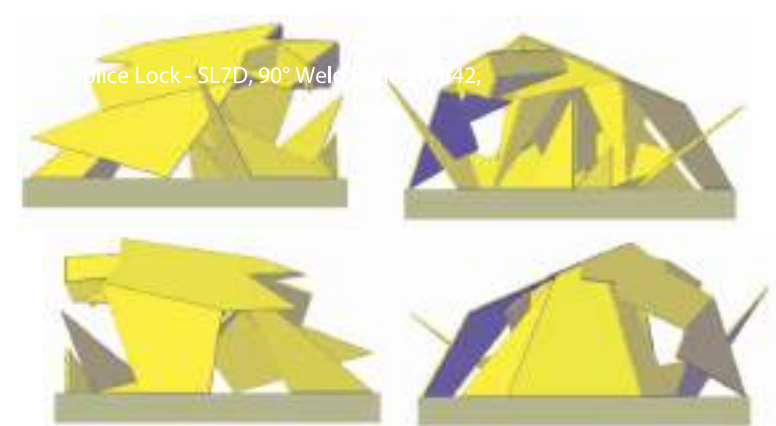
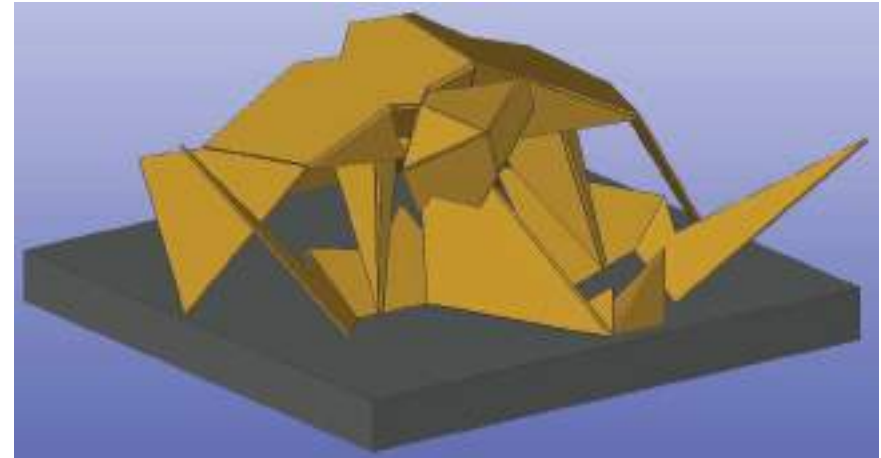
COBRA



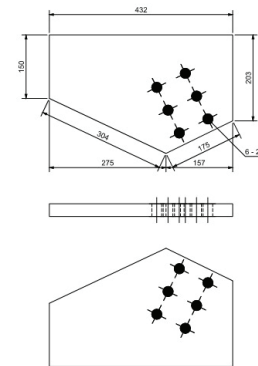
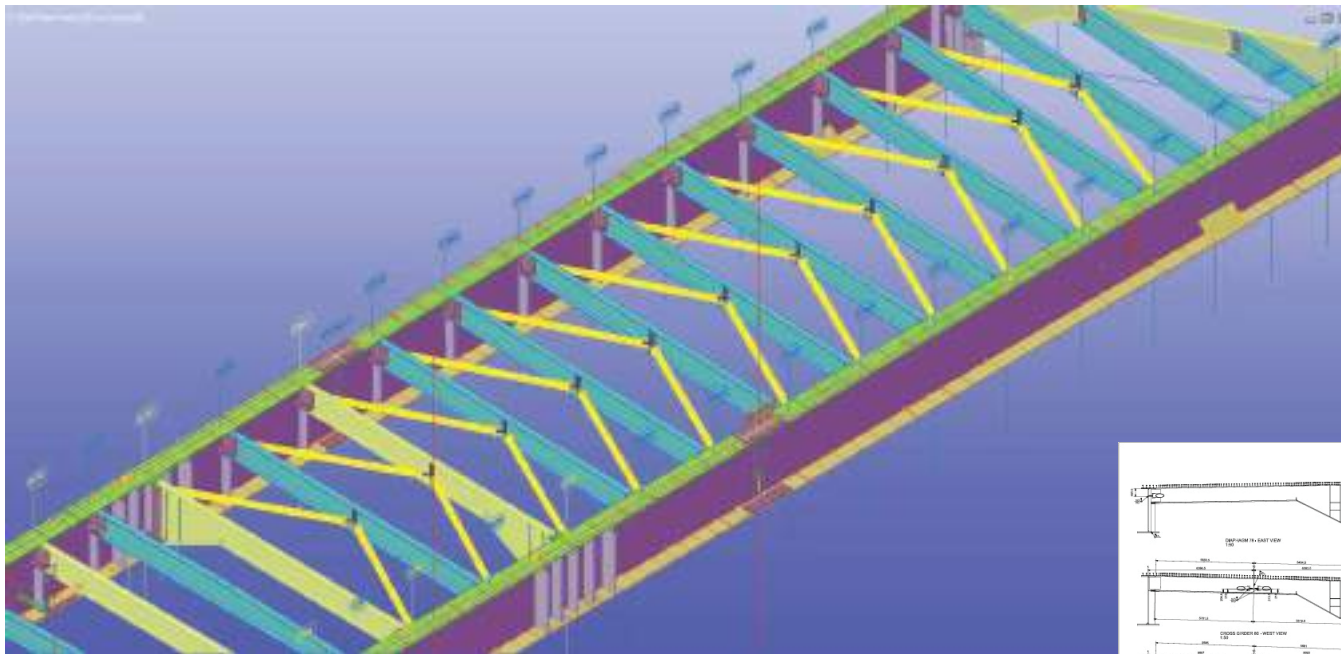
RATTLESNAKE



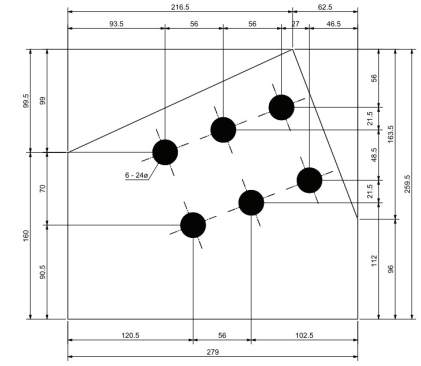
GOSHAWK



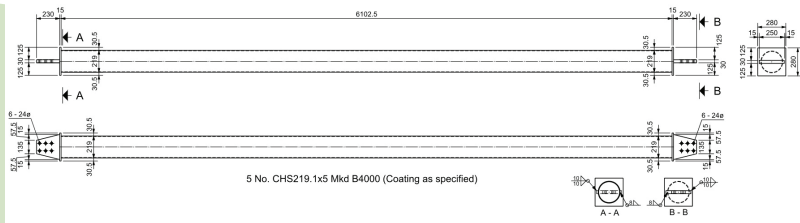
BRIDGE BRACING



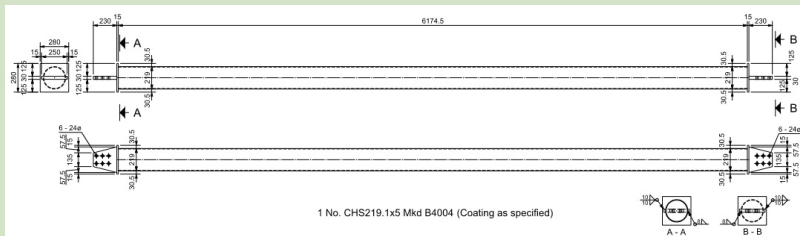
1 No. PLT30x280 Mkd PL4004 (Coating as specified)



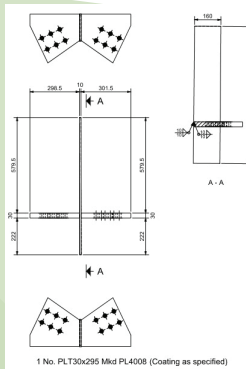
1 No. PLT30x259 - Mkd F4010
SCALE 1:2



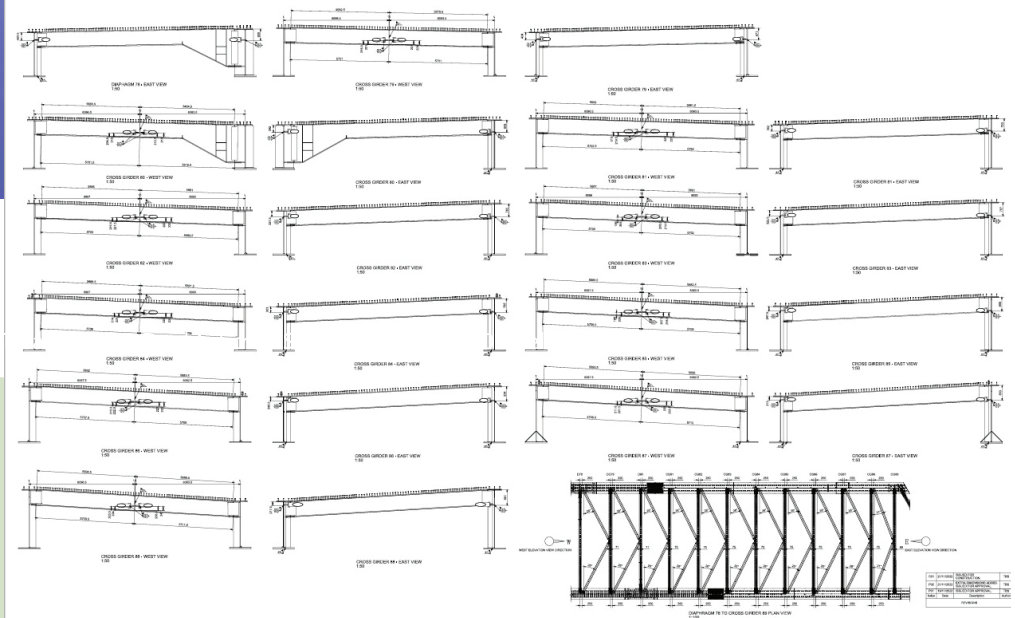
5 No. CHS219.1x5 Mkd B4000 (Coating as specified)



1 No. CHS219.1x5 Mkd B4004 (Coating as specified)

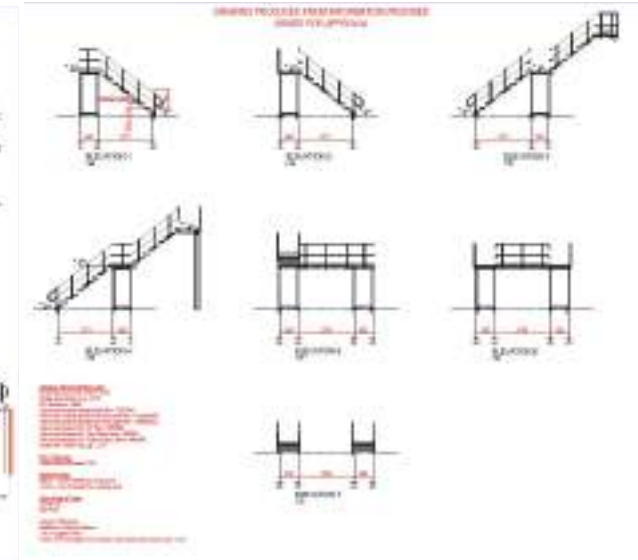
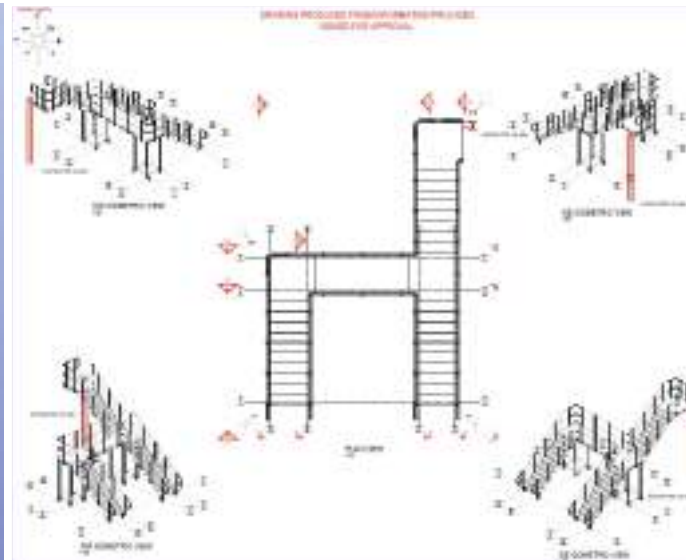


1 No. PLT30x295 Mkd PL4008 (Coating as specified)



BRIDGE FOR CONSTRUCTION

WALKWAY STAIRS & RAILINGS



SCOPE OF WORKS

Staircase

Must use off the Shelf Items -brought into Advance Steel using Special Parts
Durbar Self Colour Stair Treads -STR2, Double Screw Splice Lock -SL7D, 90°Weld Bend -WB42
Galvanised Handrail Standard Side Palm -TSGSP42, Galvanised Handrail Standard with Rake Side Palm -TSGRSP42R
Galvanised Handrail Standard with Rake Side Palm -TSGRSP42L, Galvanised Modular Rail -90°Bend -MRNB42
Galvanised Modular Rail -Stair Return Bend -MRSR42, Galvanised Modular Rail -Platform Return Bend -MR42PR
Durbar Stair Tread Fixing Lug -LUG7

Pitch of Staircase

Typical Pitch of Staircase = 38°

Handrail Heights

900mm -Top of Handrail from Nosing Line, 1100mm -Top of Handrail from Landing Level

Going & Rise of Treads

Going = 257, Rise = 201

Columns / Stanchions

80x80x3mm SHS Box Sections, 2 No. 4 Legged Towers
Towers to be tied together top and bottom with Double Screw Splice Locks -SL7D

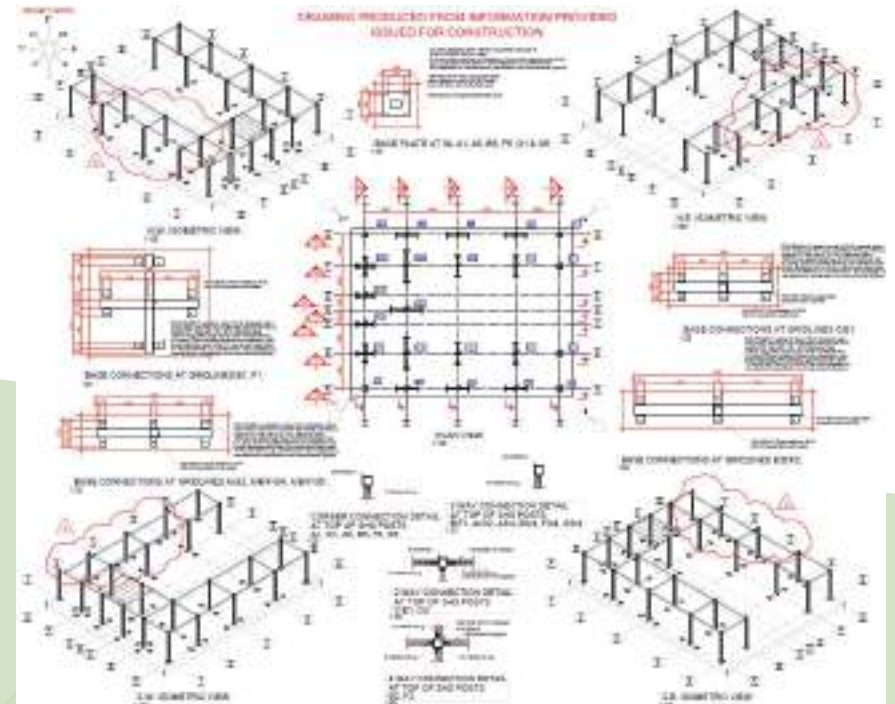
PERGOLA DESIGN FOR OFFICE GARDEN



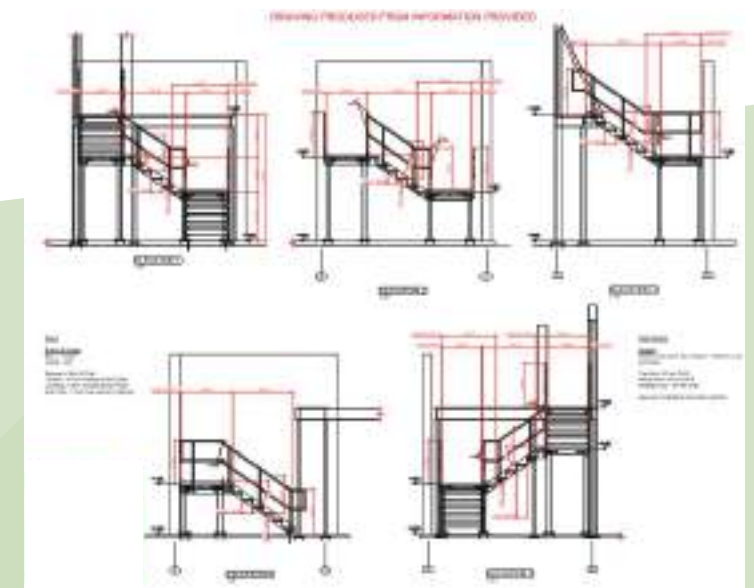
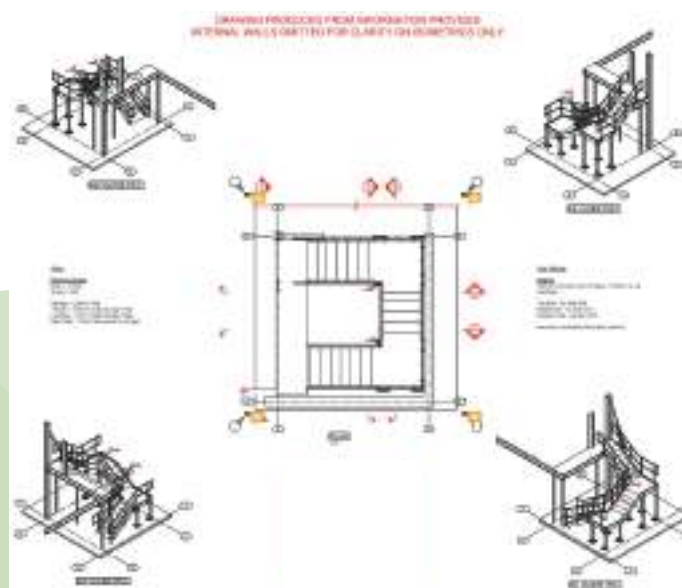
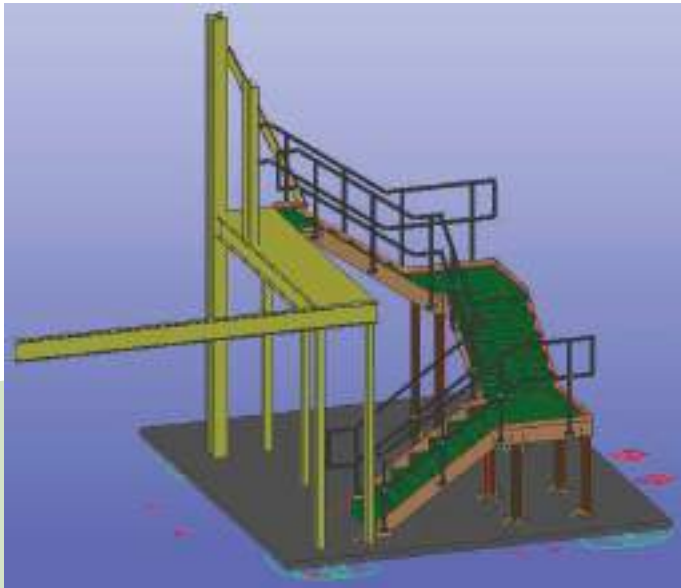
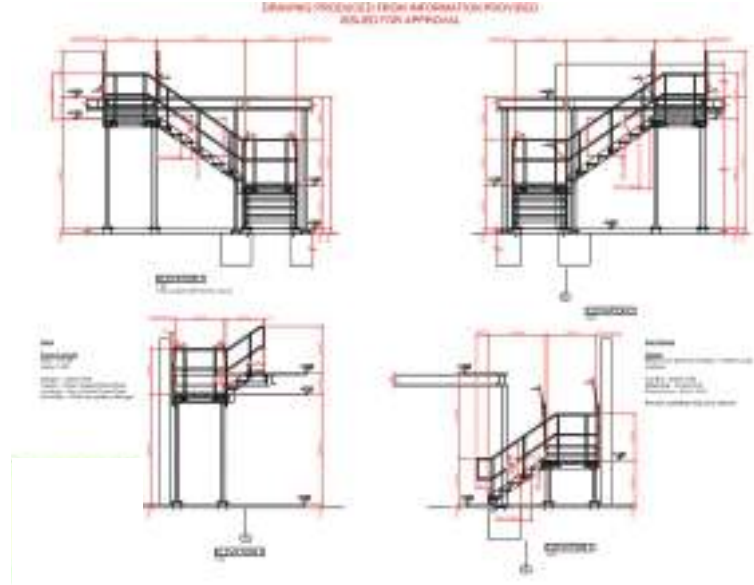
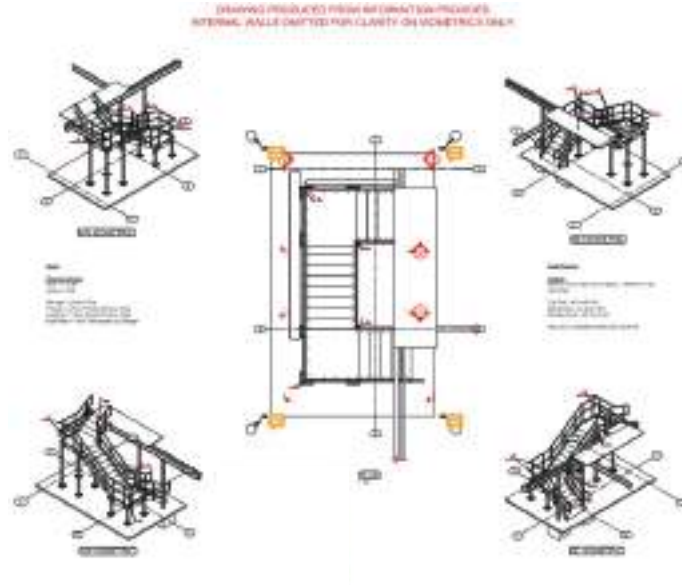
FINISHED PROJECT PHOTOS

It is always great to see the finished job after hours of detailing work to create the GAs, Assemblies and Fabrication Documentation.

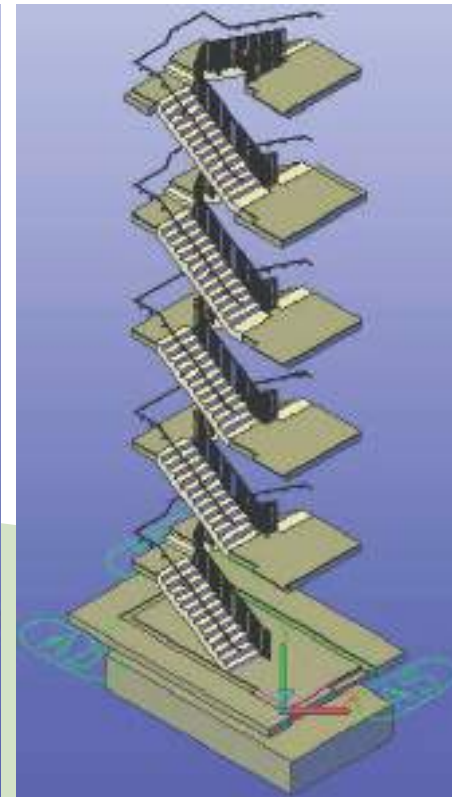
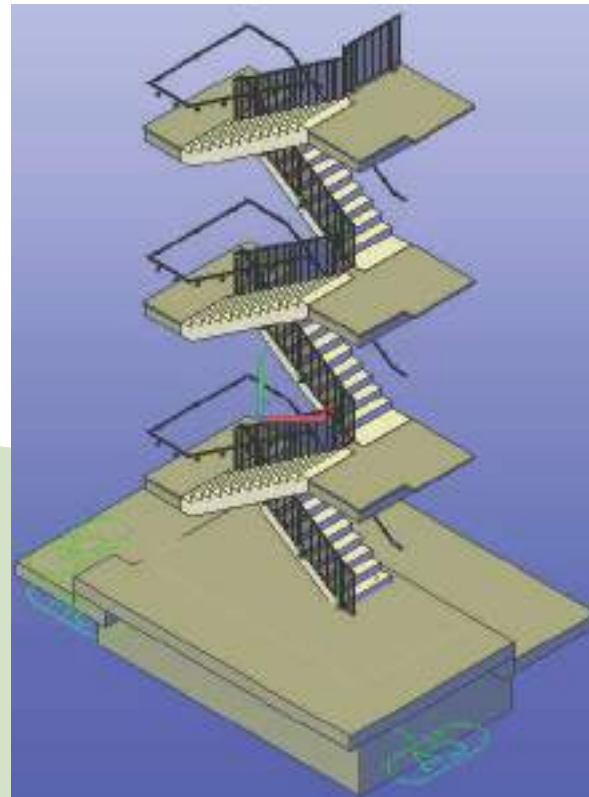
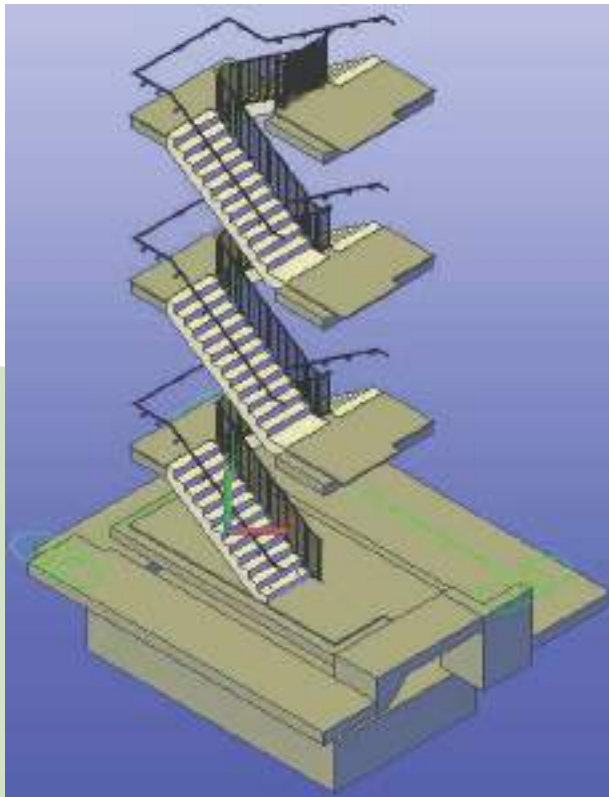
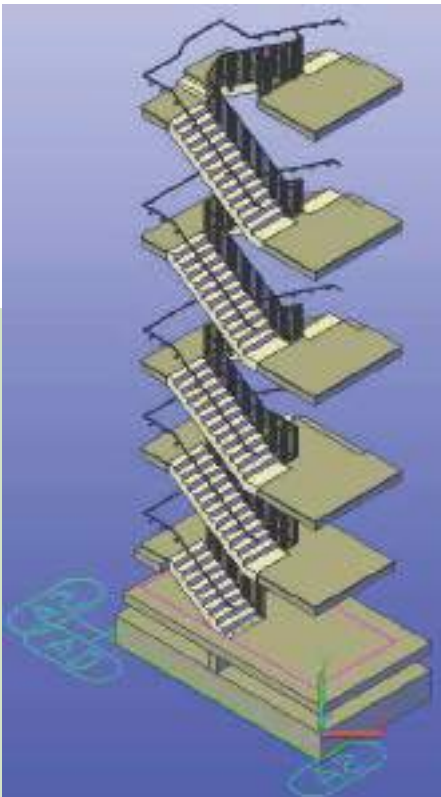
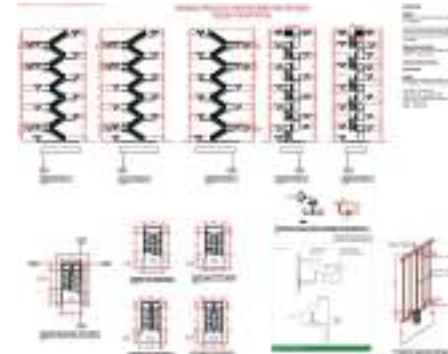
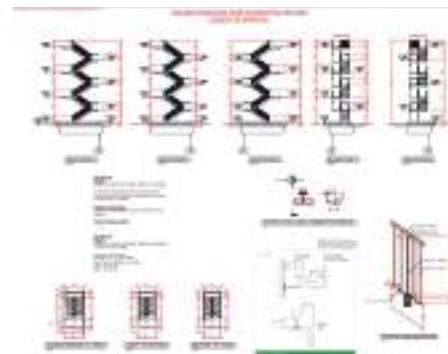
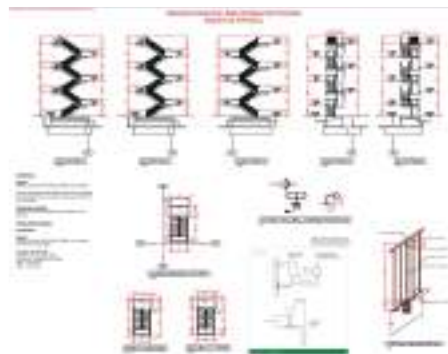
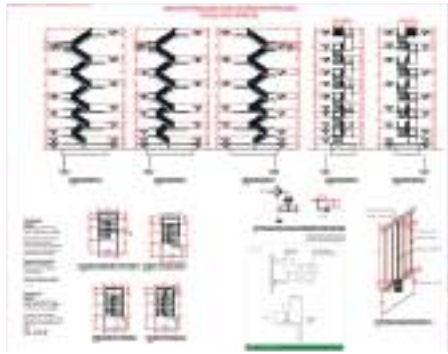
Pergola Design for Office Garden - MAY 22.



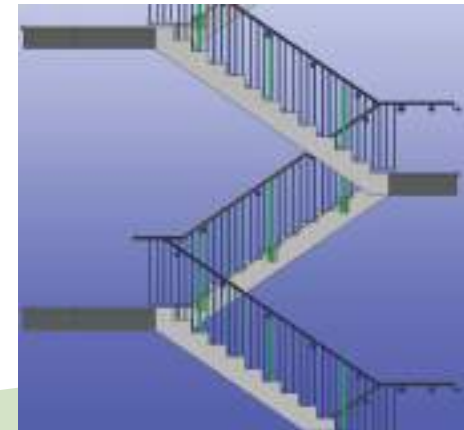
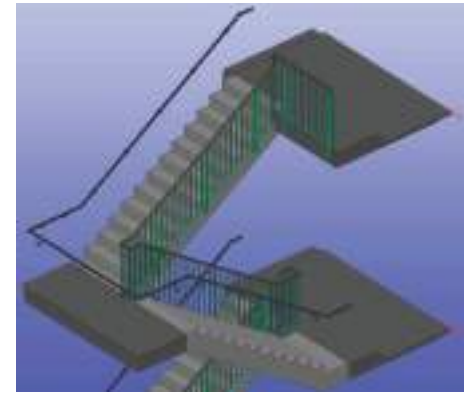
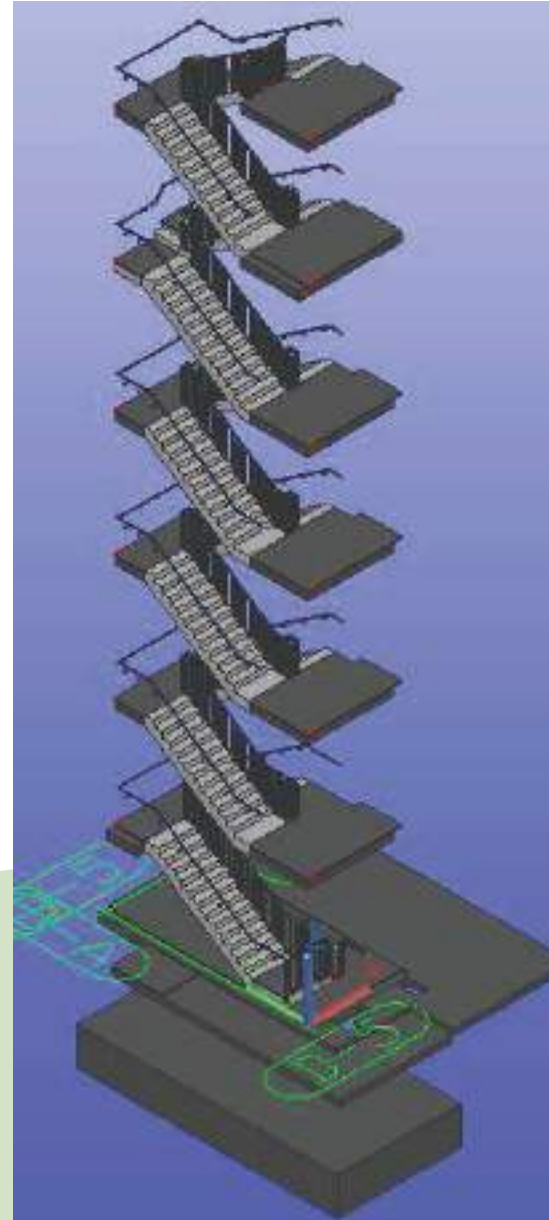
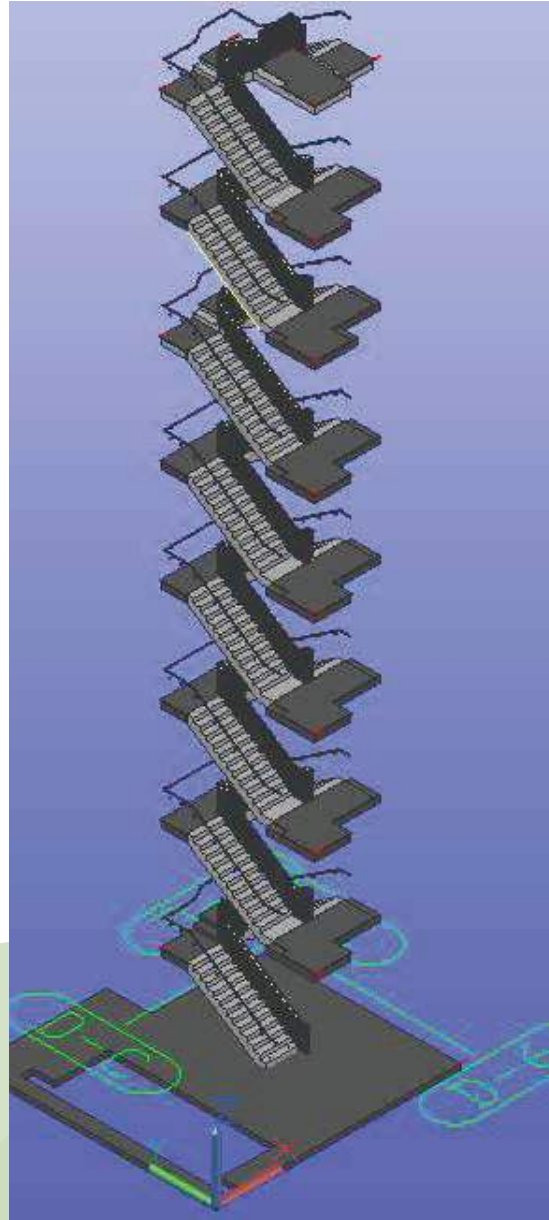
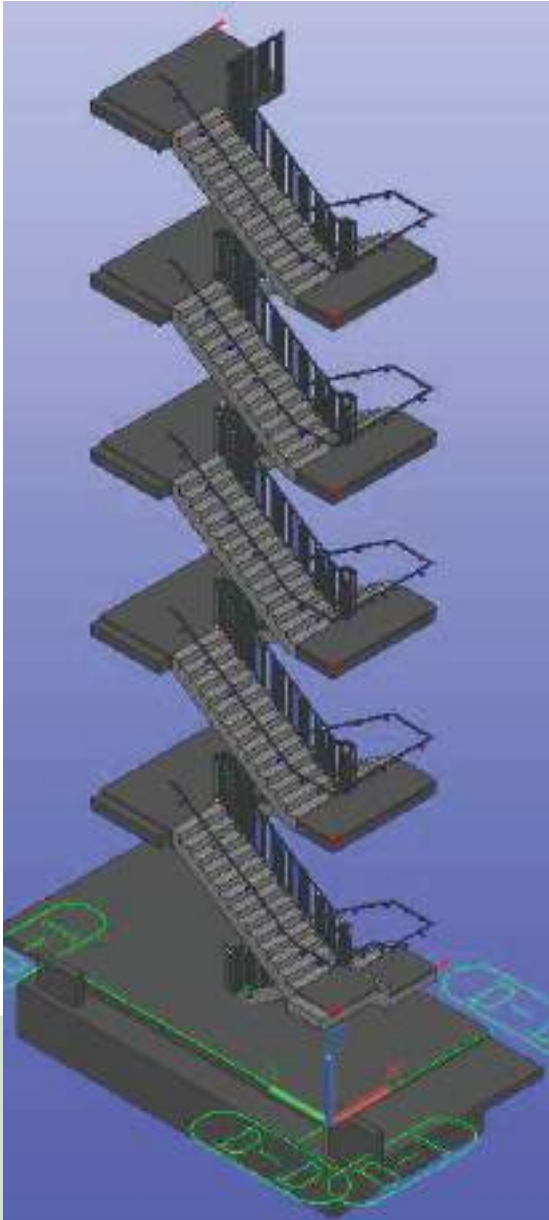
SET OF STAIRS & RAILINGS



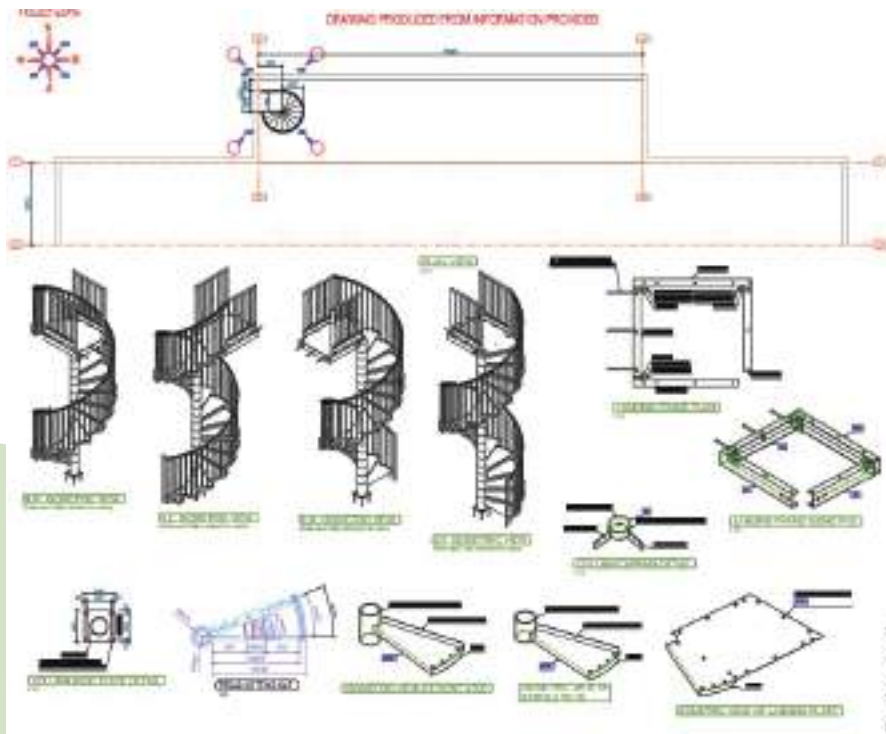
SET OF STAIRS & RAILINGS



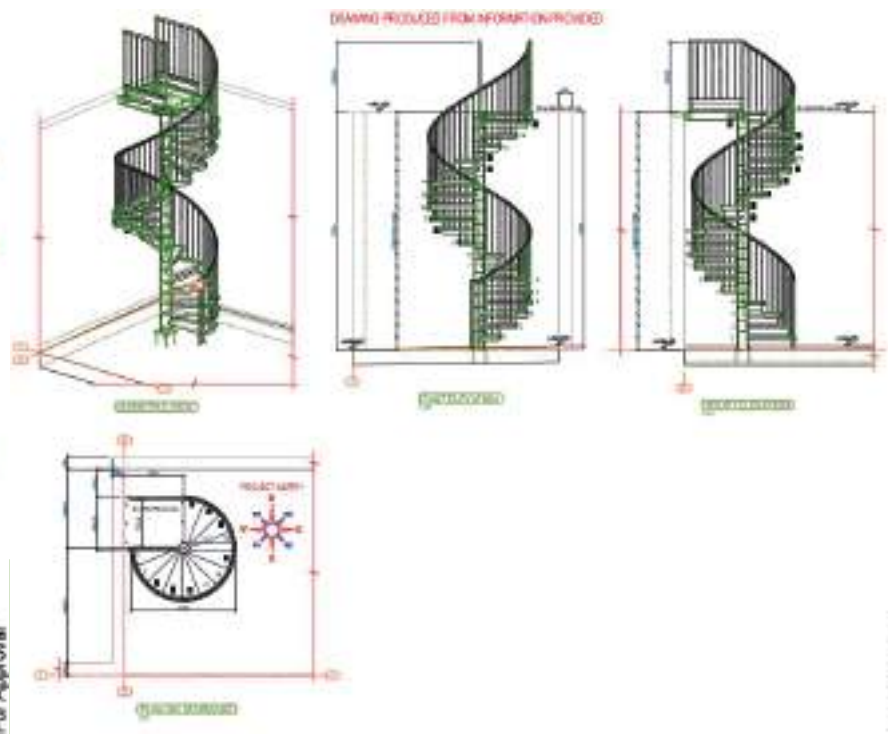
SET OF STAIRS & RAILINGS



SET OF STAIRS & RAILINGS



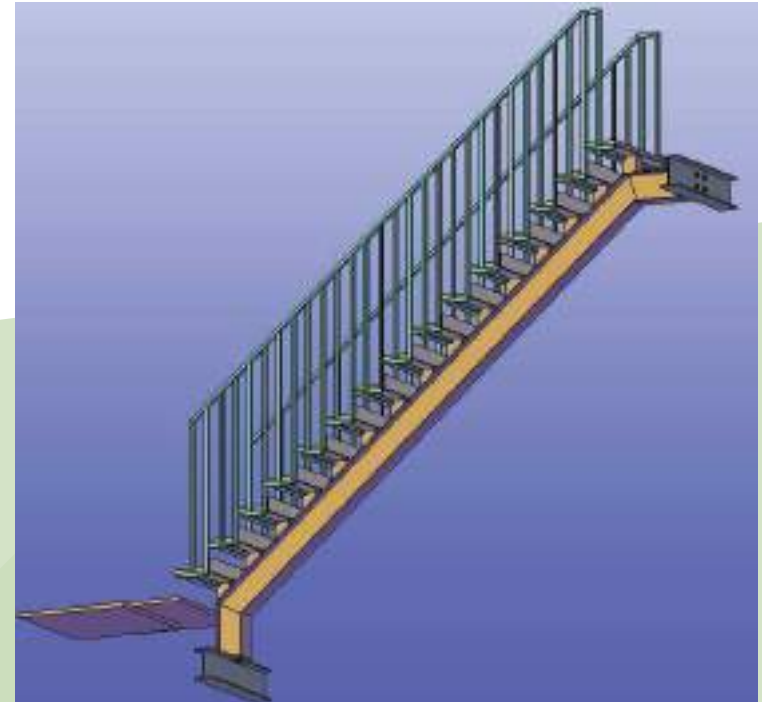
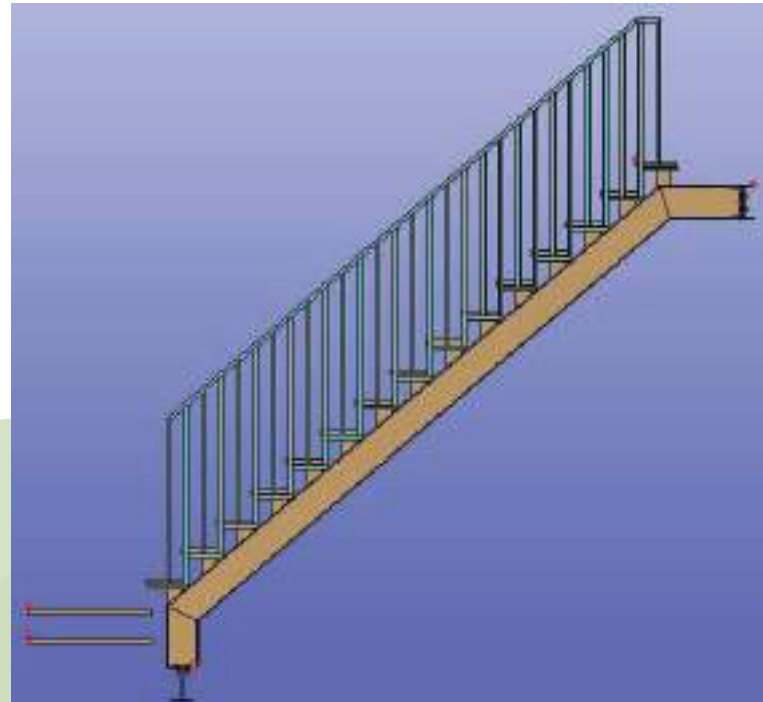
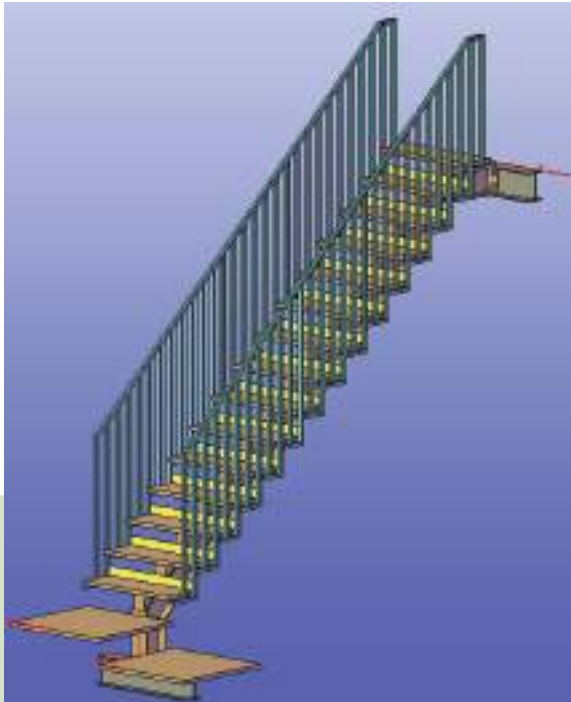
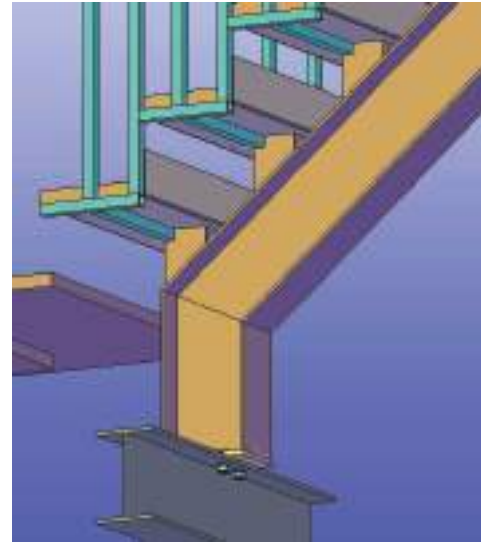
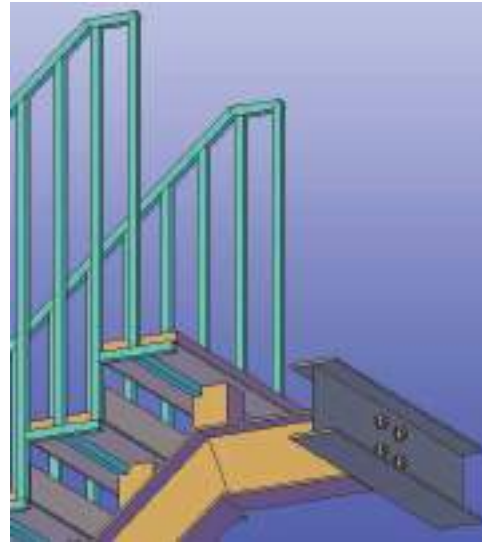
For Approval



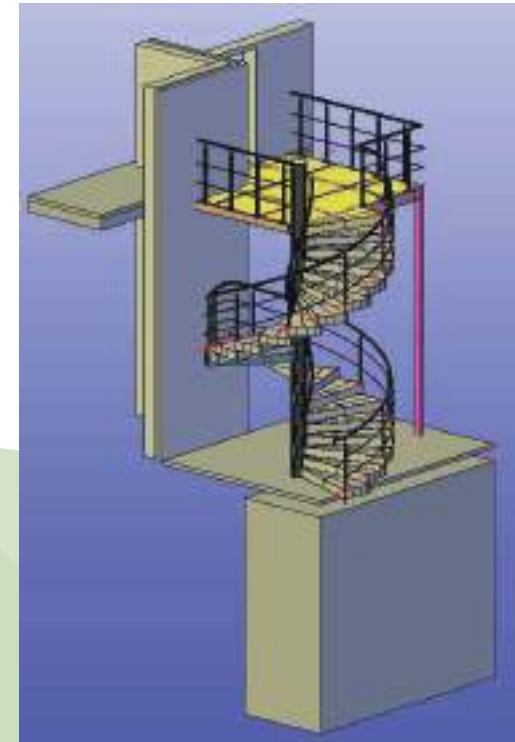
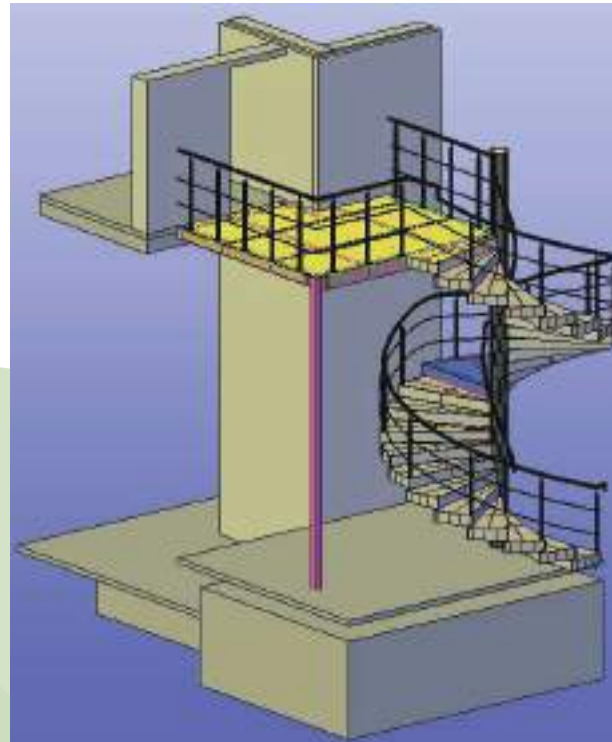
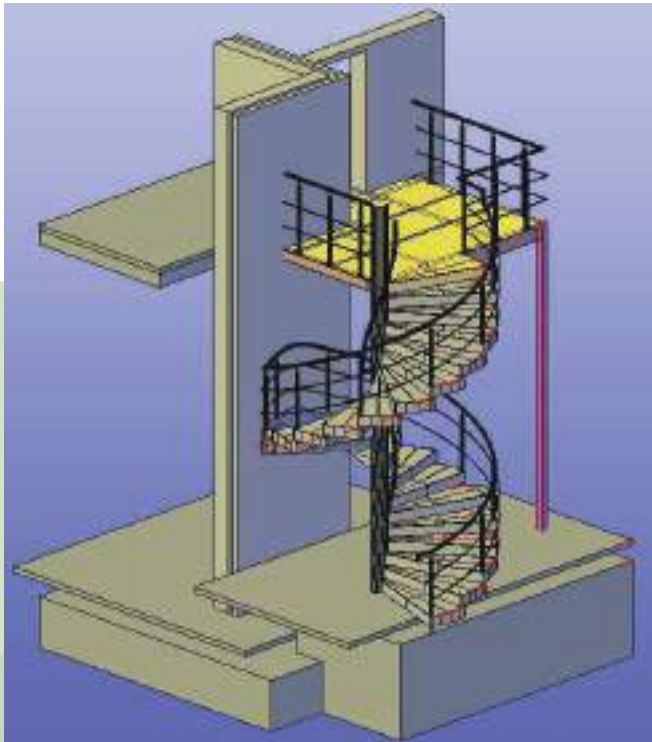
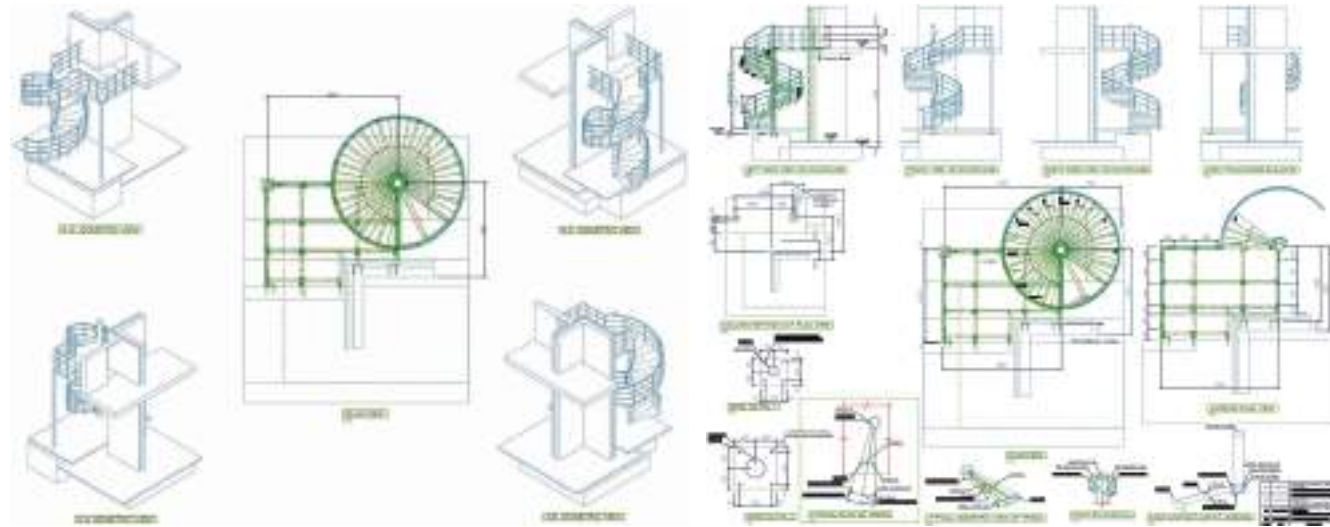
For Approval



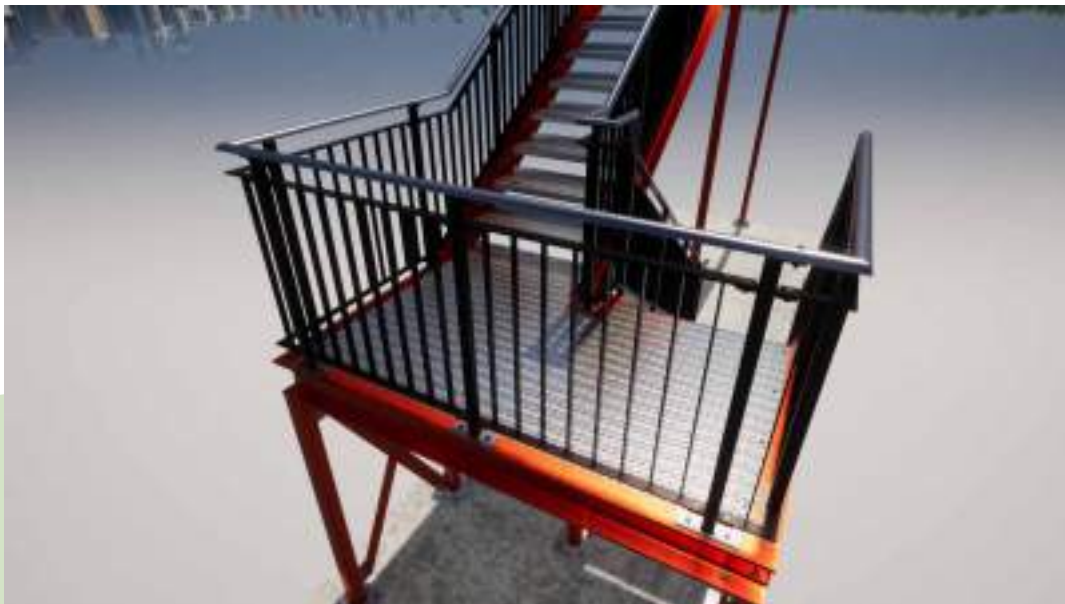
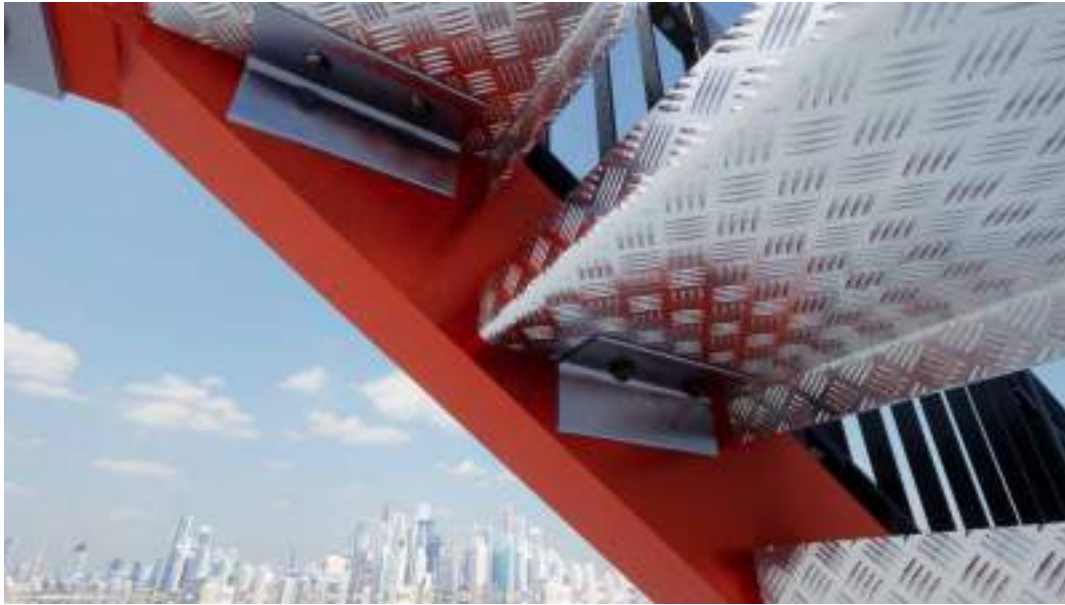
SET OF STAIRS & RAILINGS



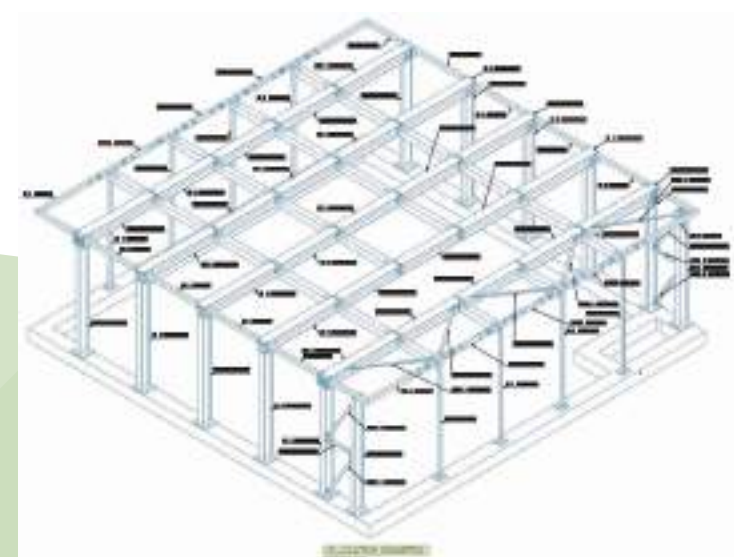
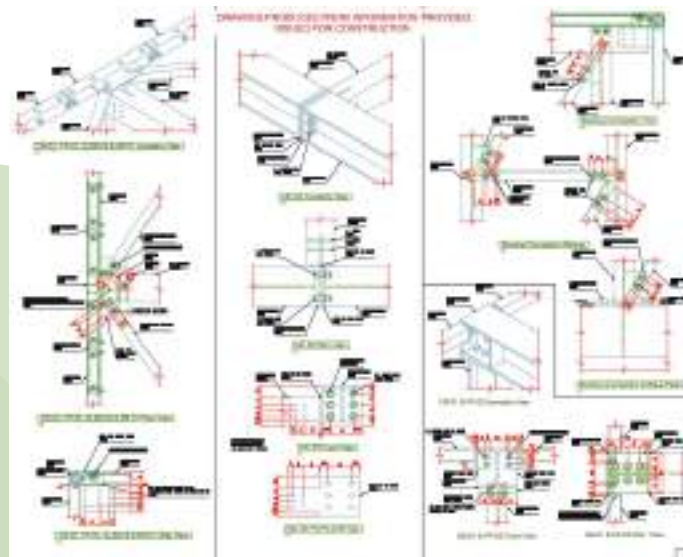
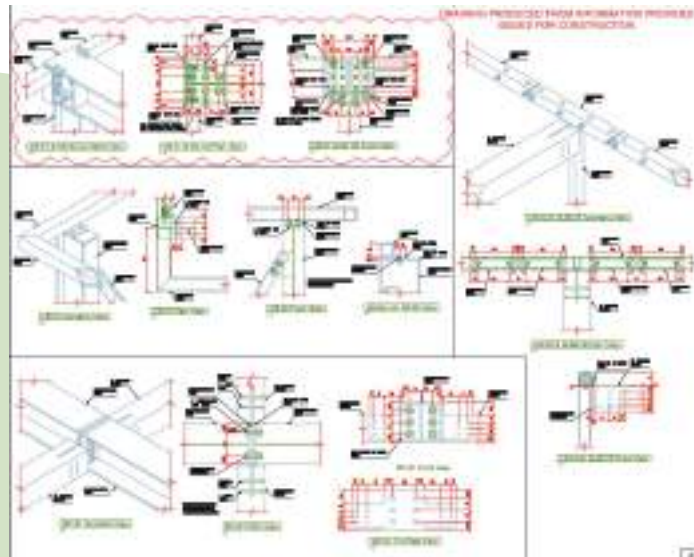
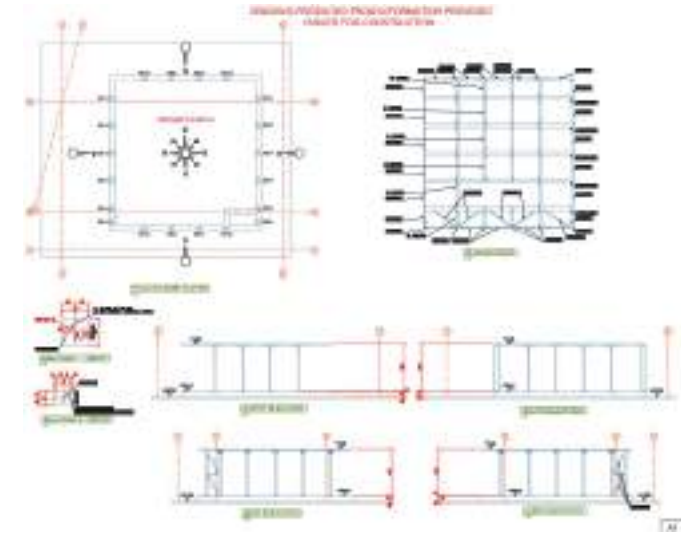
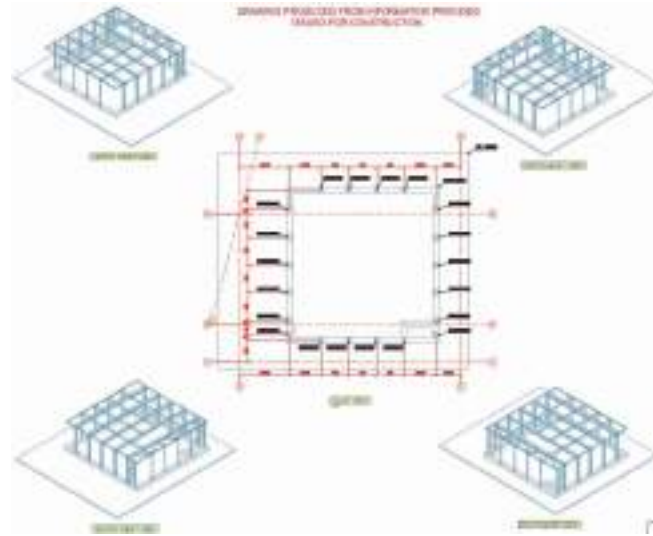
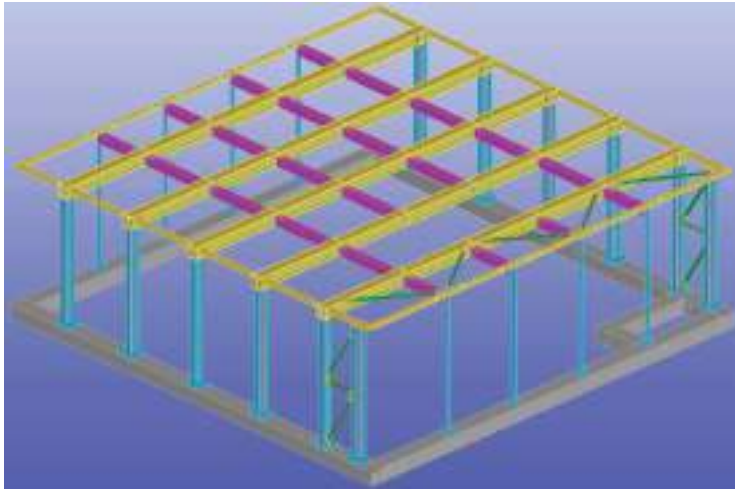
3 SPIRAL STAIRCASES



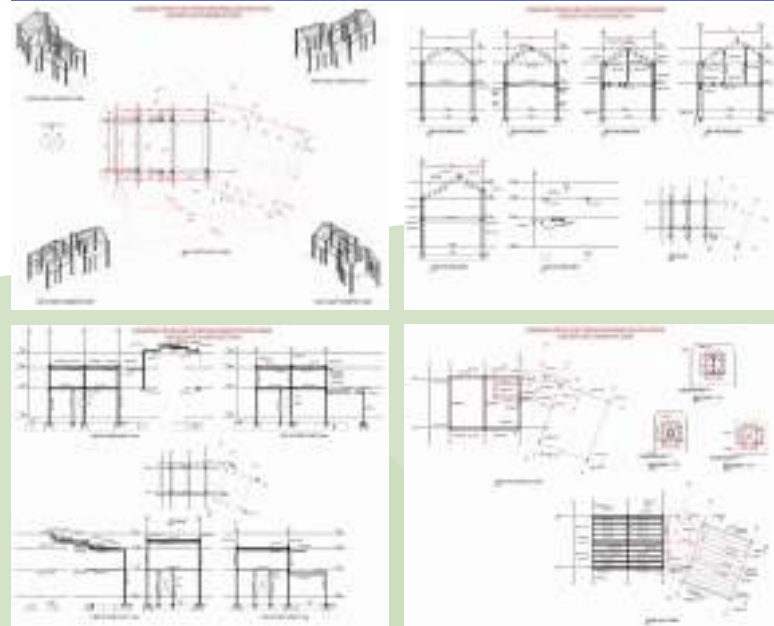
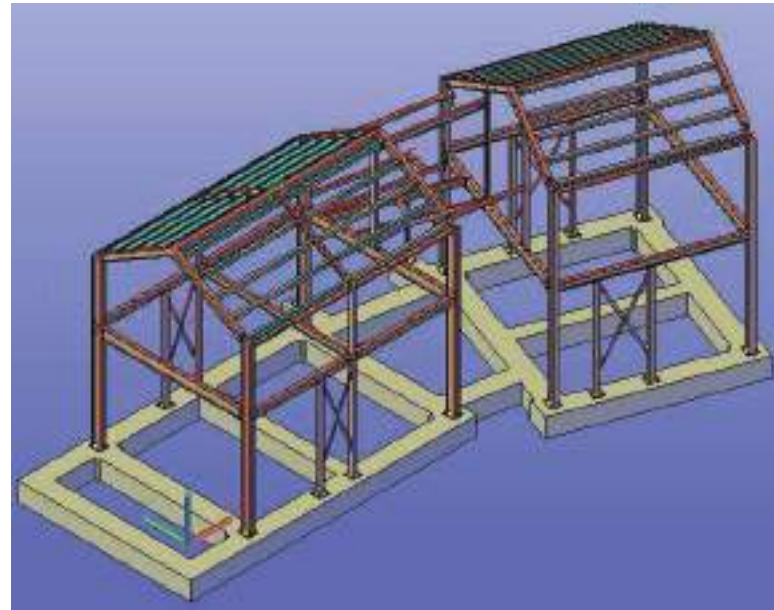
SCHOOL STAIRCASE RENDERED VIEW



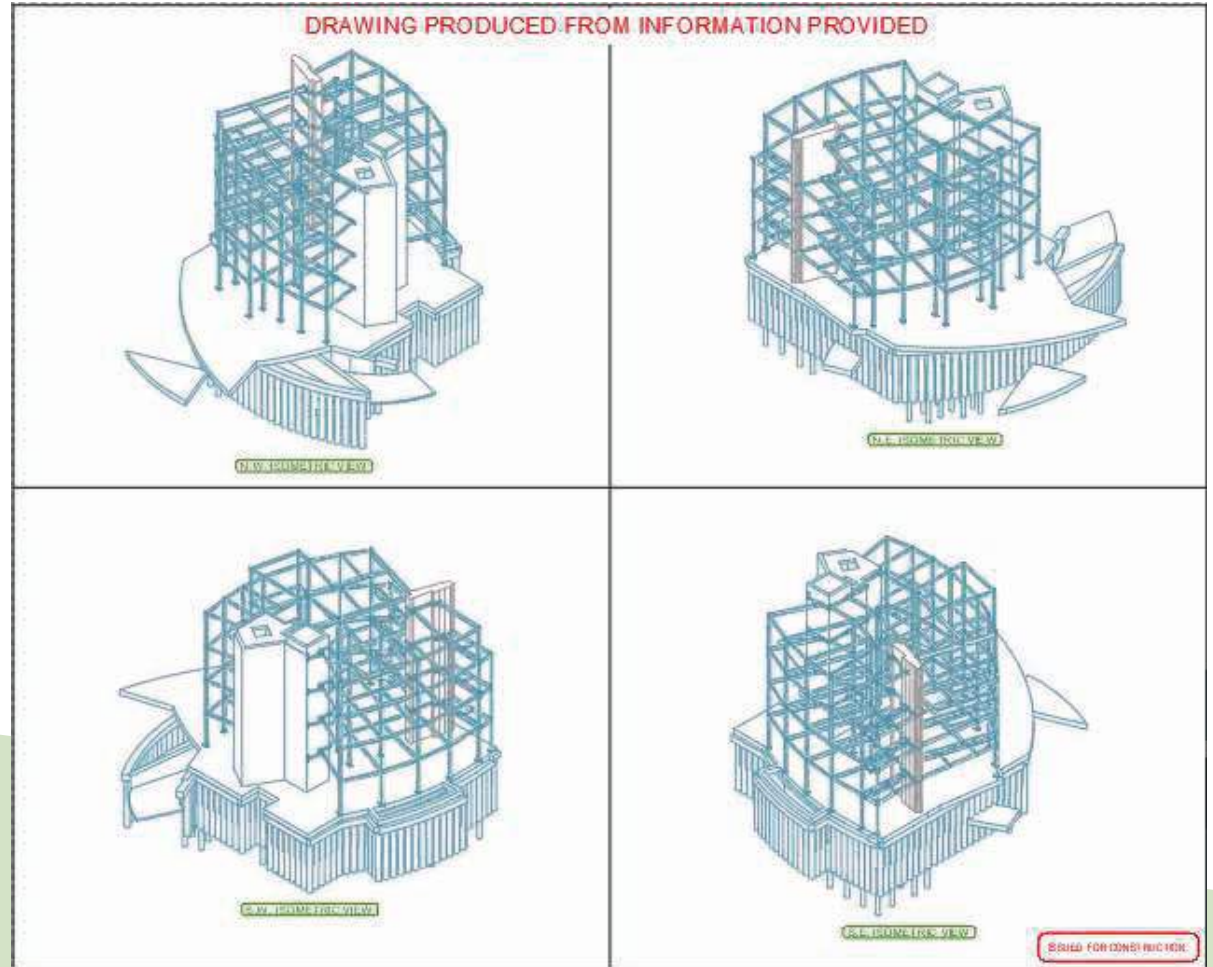
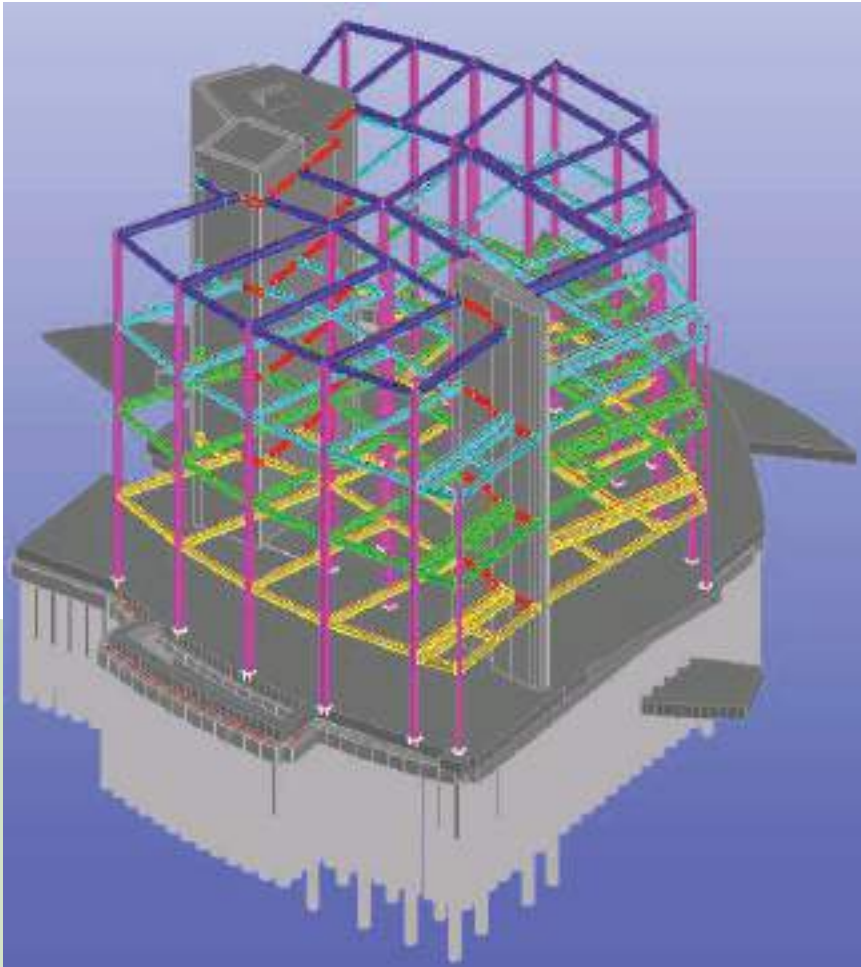
GARDEN ROOM STEEL STRUCTURE



NEW HOUSE BUILD STRUCTURAL STEELWORK



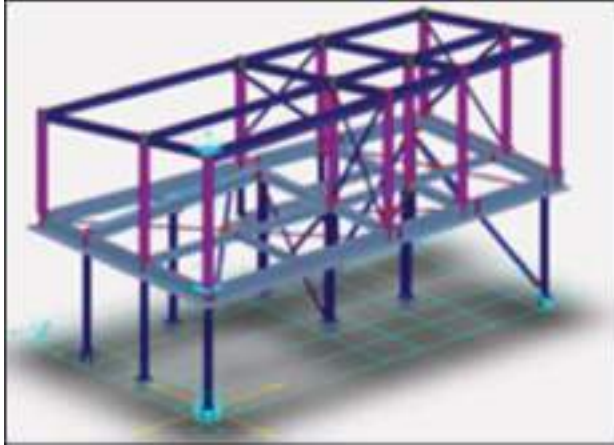
BUILDING STRUCTURE



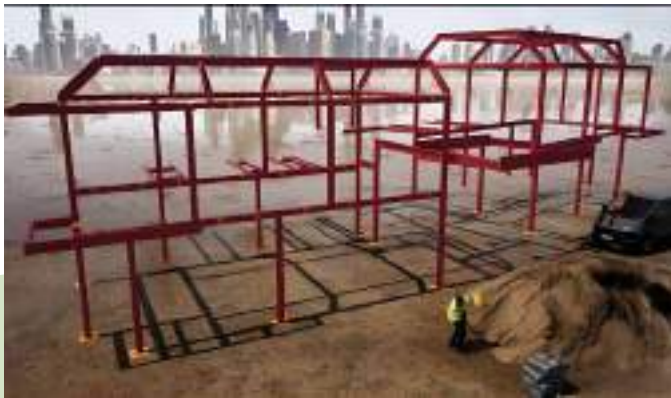
BUILDING STRUCTURE IMAGES



HOUSE EXTENSION



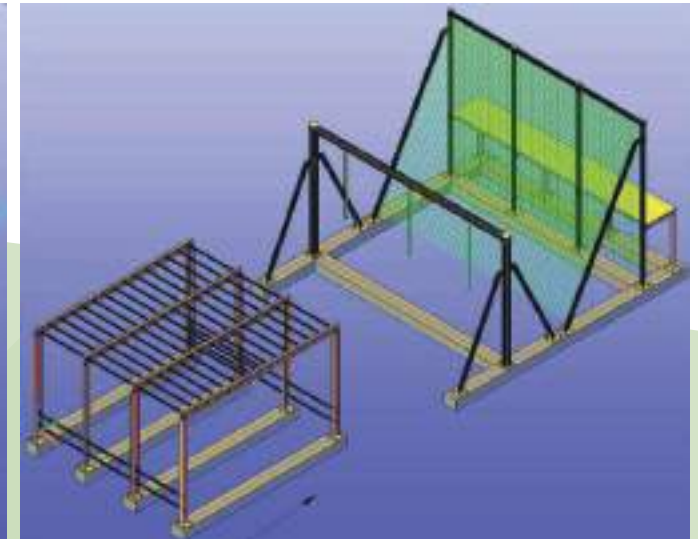
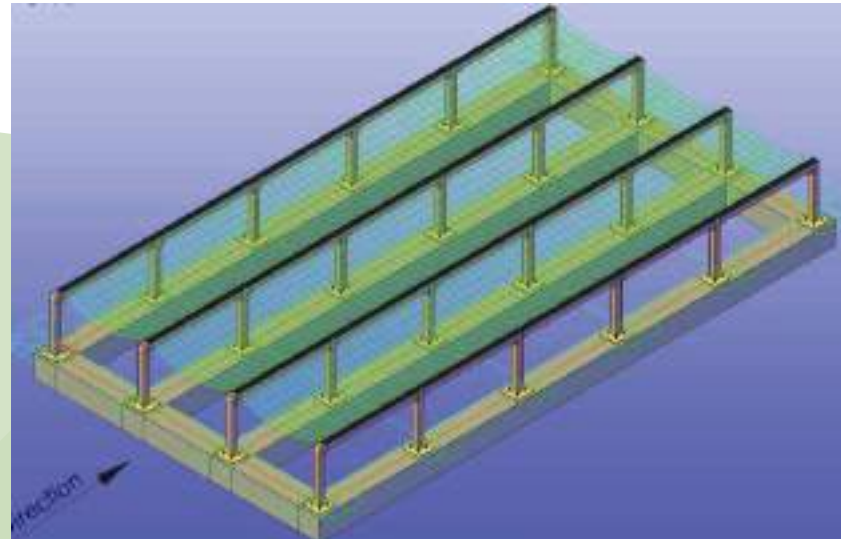
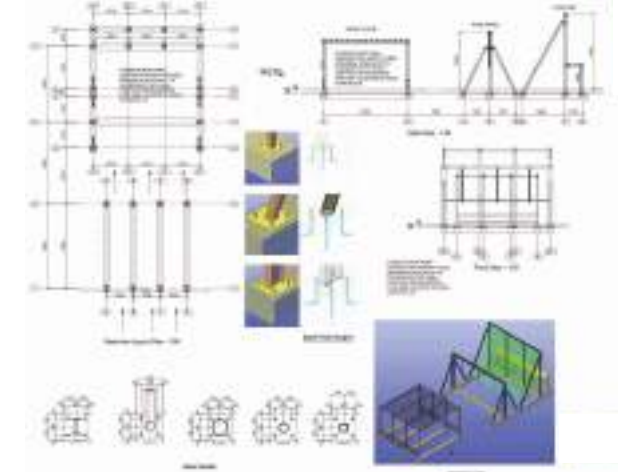
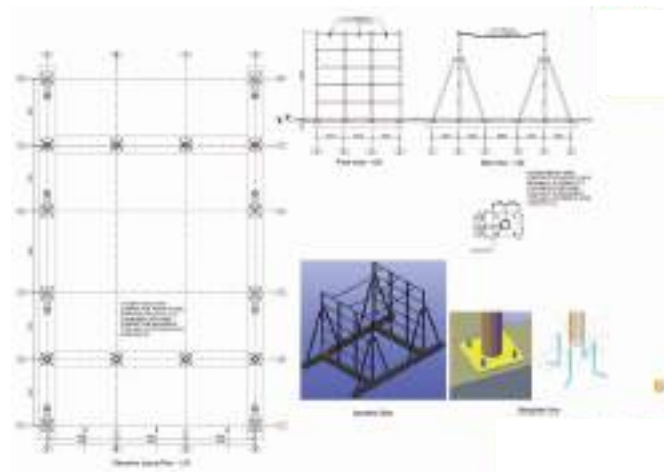
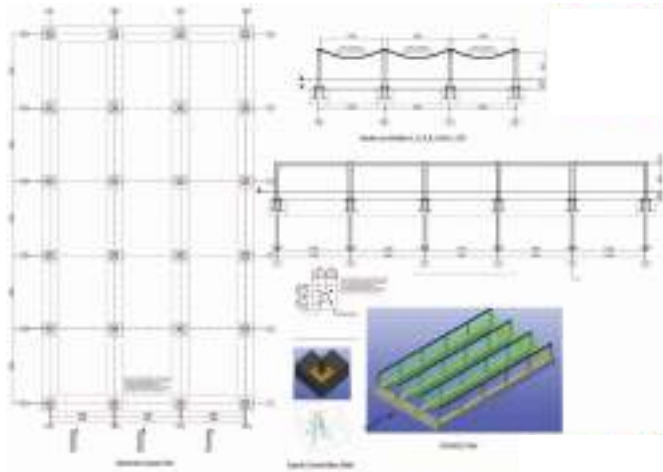
RENDERED IMAGES USING TWINMOTION



OBSTACLE COURSE

NOT THE NORMAL STEEL STRUCTURE

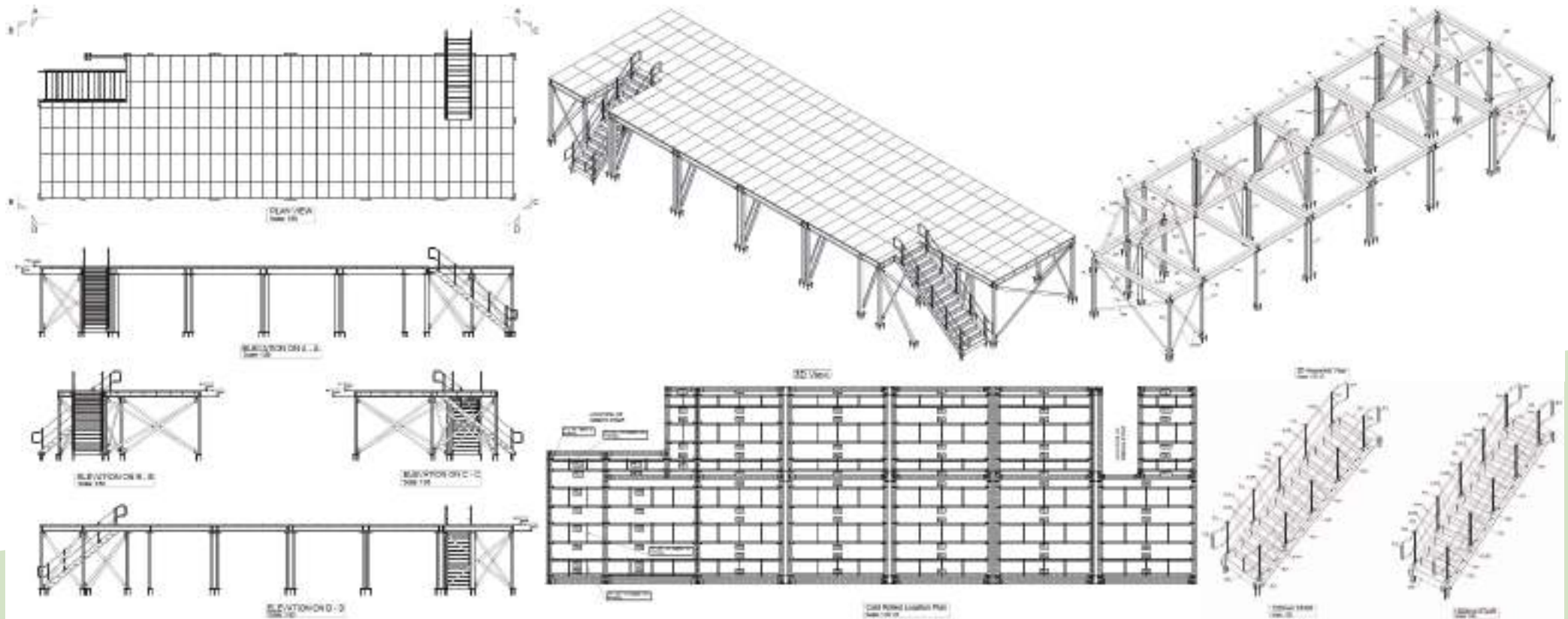
We recently got asked to model and generate the fabrication details for these Obstacles. Modelled in Advance Steel.



MEZZANINE FLOOR

NEED EXTRA ROOM?

We have recently been asked to model and generate the fabrication details of a mezzanine floor. The Mezzanine floor has been designed to 4.8kN/m² –Light Storage as indicated in BS 6399 -Part 1. All drawings with Structural Engineer. Mezzanine Handrail by others.



MEZZANINE FLOOR

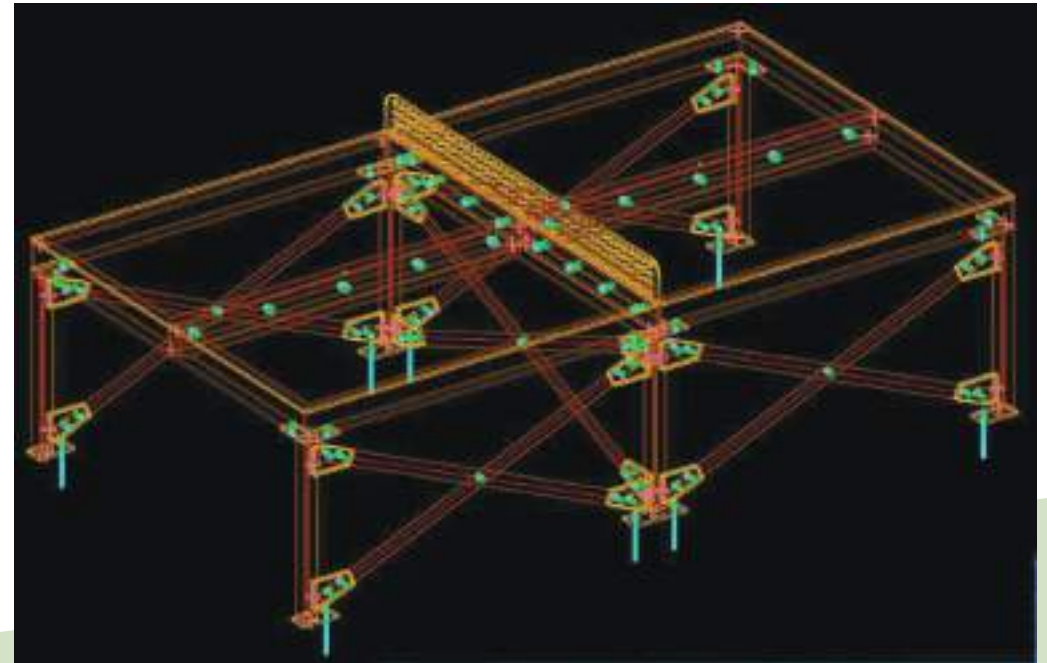
INSTALLED IMAGES



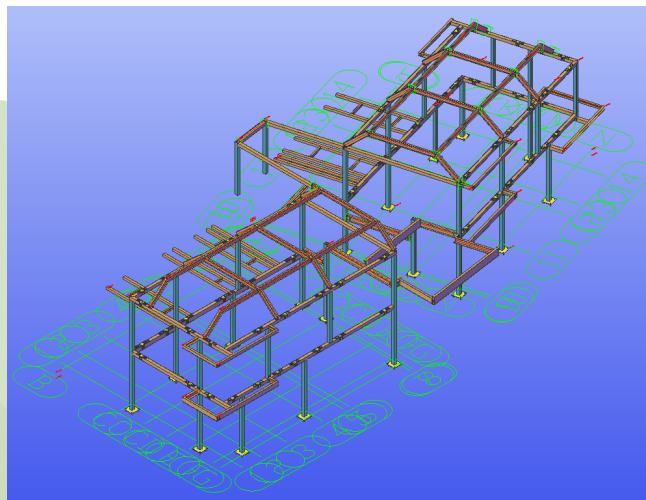
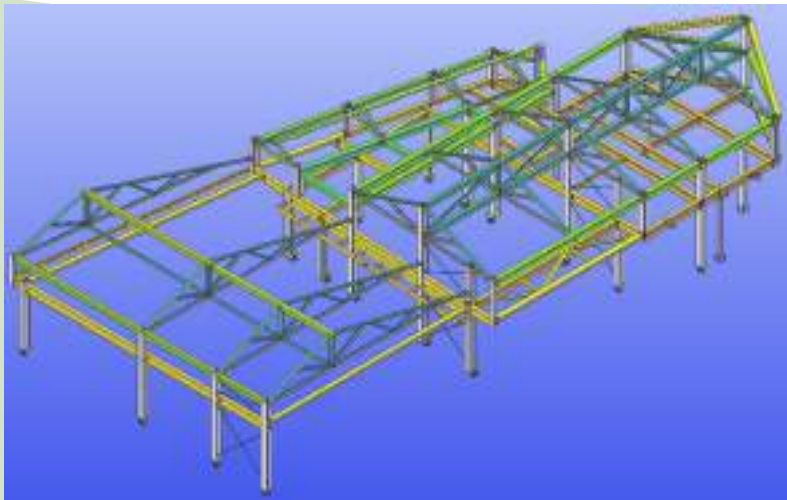
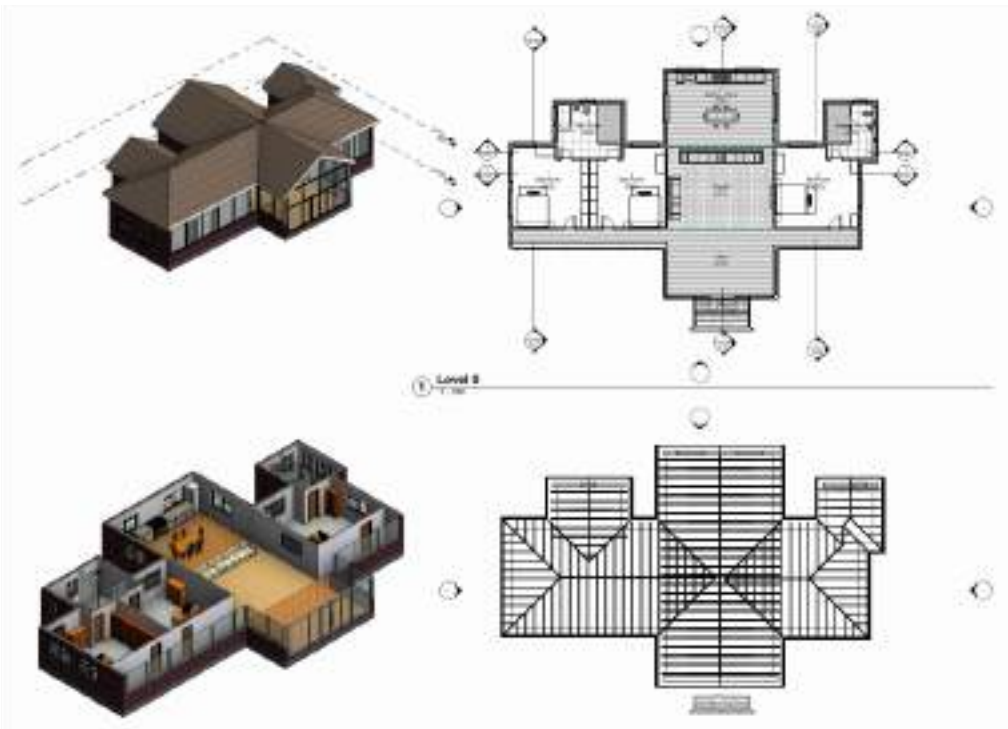
PING PONG TABLE

NOT THE NORMAL STEEL STRUCTURE

We recently got asked to model and generate the fabrication details for this Ping Pong Table for an office recreation room. Modelled in Advance Steel and Rendered using blender. Modelled, drawings created and out the door in less than 2 hours.



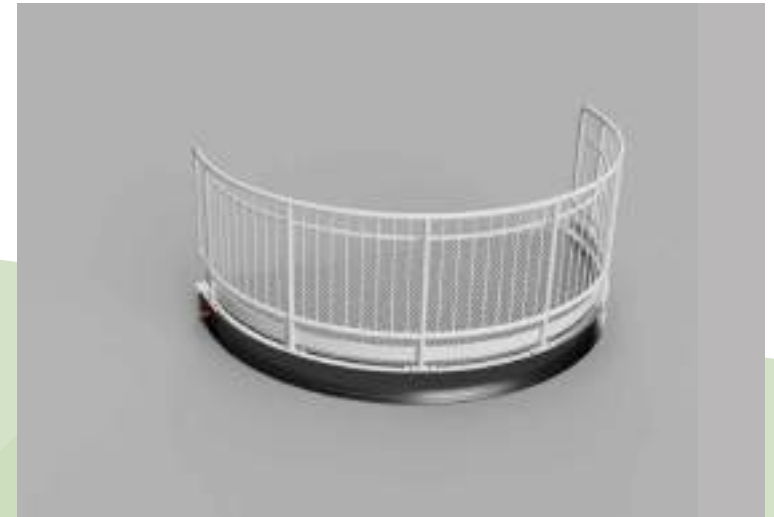
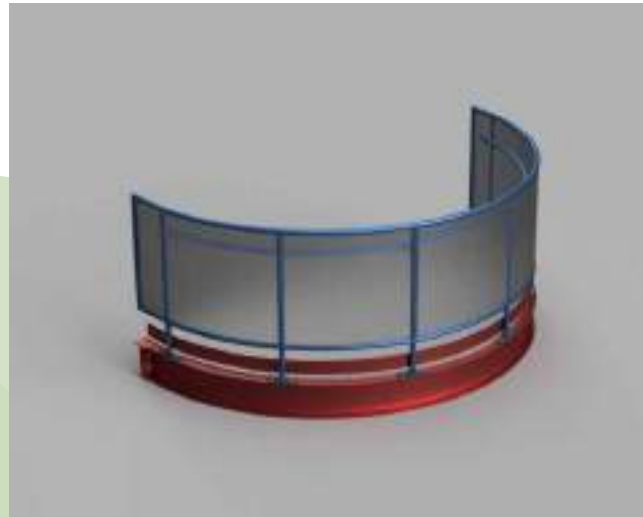
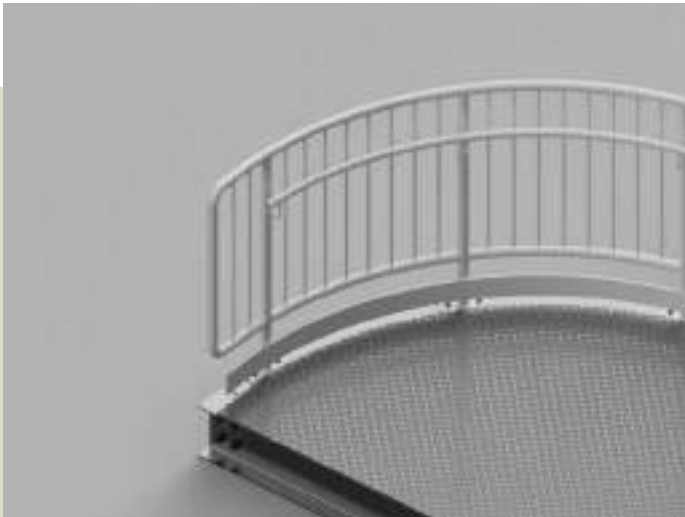
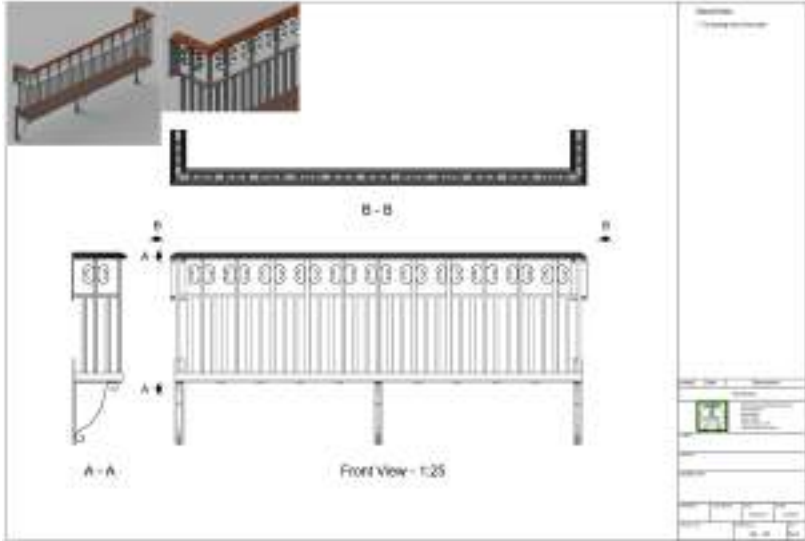
RESIDENTIAL PLANS



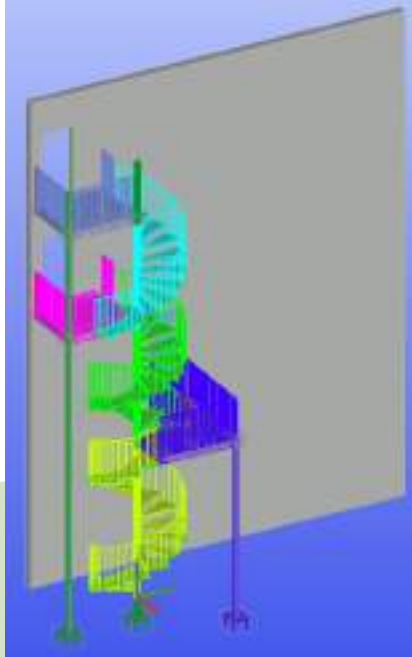
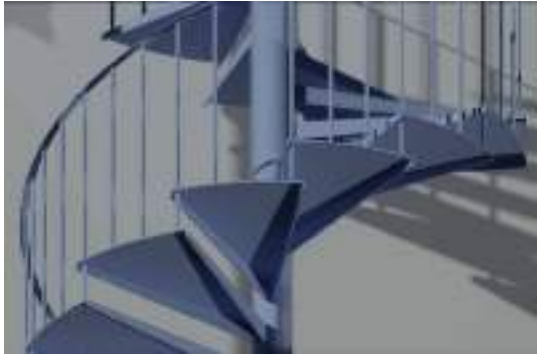
RENDERED IMAGES USING REVIT



BALCONY MOCK-UPS



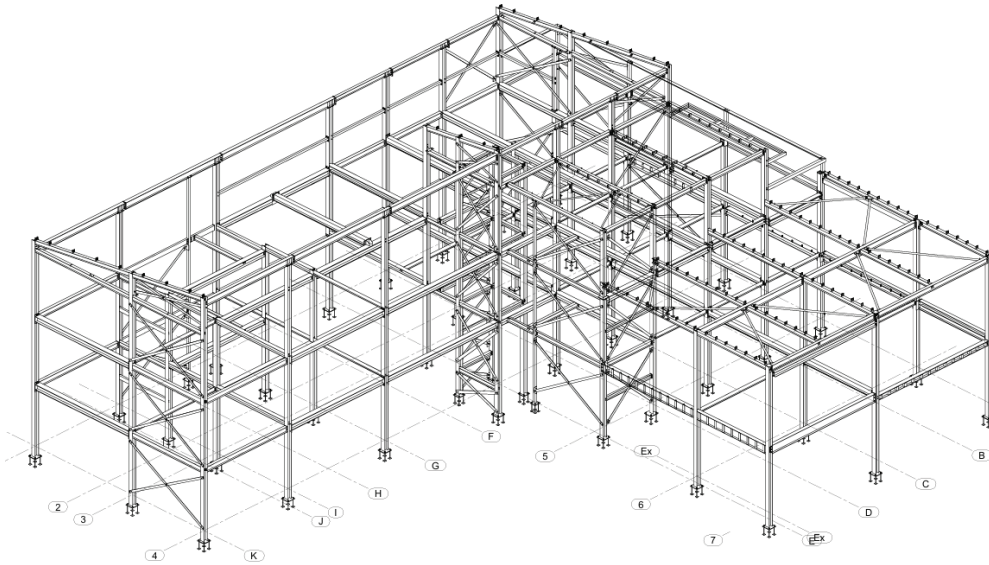
FIRE ESCAPES



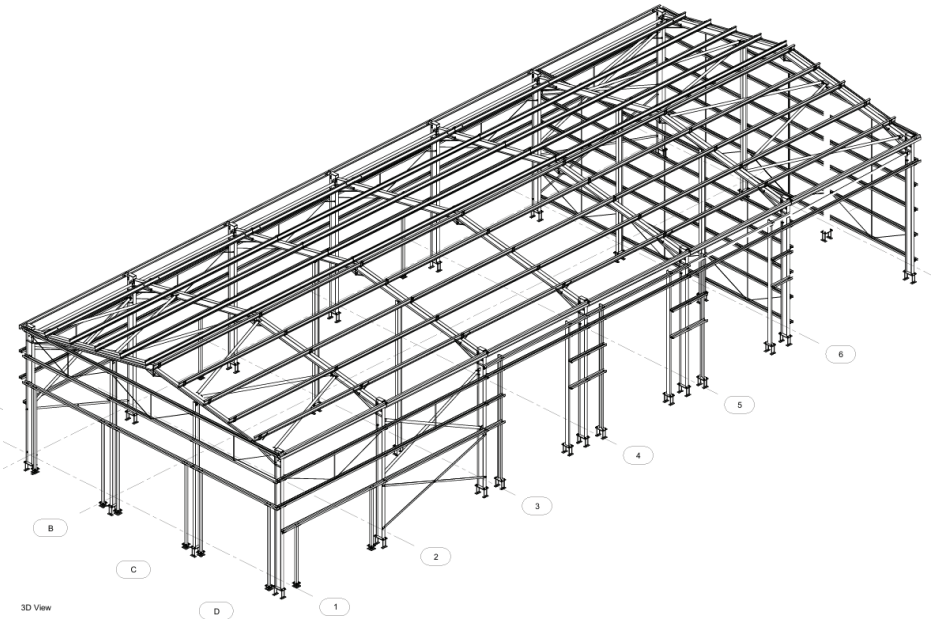
RENDERED SCAFFOLD PLATFORMS



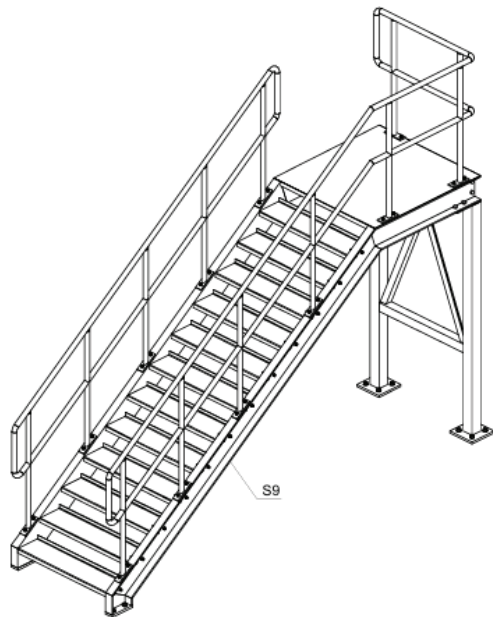
STEEL DETAILING EXAMPLE DRAWINGS



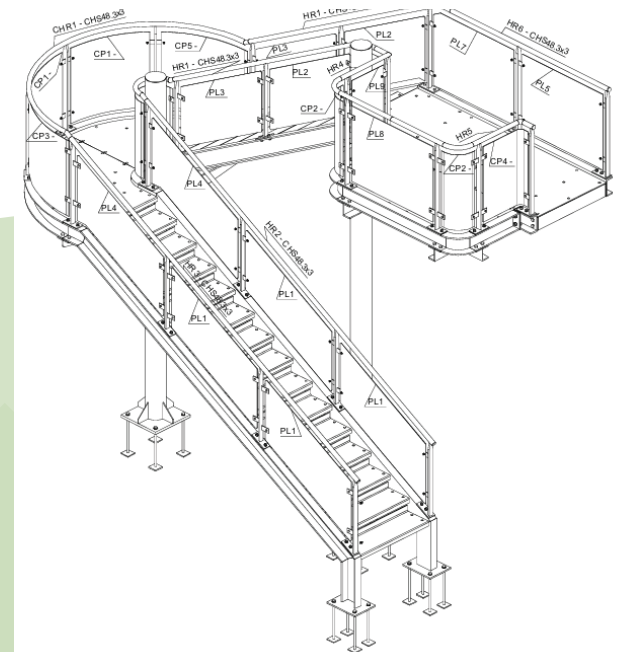
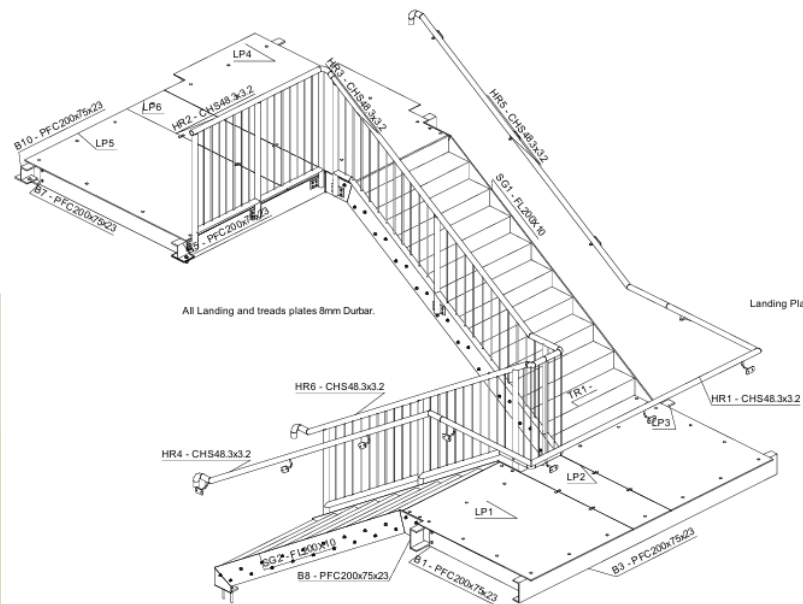
3D View



3D View



3D View



WHAT ELSE DO WE OFFER?

We are proud to announce that we now offer a New Service:

- ▲ Engraving Services
- ▲ Cutting Services

Engraving Services

Materials we can engrave on:-
Wood, Metal, Acrylic, Slate, Cork, Leather, Drinking Bottles, Glass.

Cutting Services

Materials we can Cut out:-
Wood, Acrylic, Card, Cork, Leather, PU Heat Transfer Vinyl (T-Shirts), Self-Adhesive Vinyl (Car Stickers).



TESTIMONIALS

“



Teresa has a vast technical knowledge and she understands what she's doing. She's aware of contractual commitments and always works towards helping you achieve them. Teresa is personable and is easy to communicate with. She grasps the problem and is business like in solving it.

”

Alan Staton Bower-Bennett Ltd

“



We sat a 3-day introduction to AutoCAD course with 3DSDS, (Teresa) and it was delivered on point, and everything was tailored to our needs. The course was delivered with a lot of hands-on work, (which is a must) and documented “how to” information for reference was also handed out and very useful. If you are looking to get started with AutoCAD, I would highly recommend this course!

”

Matt Covil -Cubic Defense (UK)

“



Teresa was instrumental helping my new team at 1Techno (Distributor for GRAITEC) get on their feet. For the past five years she has been a gem, putting her heart into every project. Her people skills are excellent.

”

Eddie Gevorkian CEO 1 Techno Canada

“



3DSDS provided a fast, efficient and effective service, often delivering what was asked ahead of schedule. Any queries were dealt with straight away. I would have no hesitation in using them again or recommending them to others.

”

Peter Scannell -MacaiProjects Ltd

“



Teresa is an exceptional tutor. Very thorough with very in-depth knowledge of Advance steel as well as the fabrication and erection processes. She has very good communication skills and is a great judge of what you need to proceed. Every minute was valuable, and I would recommend her to anyone of any ability.

”

Russ Uridge -DesignBYRuss

“



Teresa provides a very professional and prompt service that we can rely upon. Her experience and expertise have enabled use to grow as a company without the huge expense of new CAD machines, draughtsmen & licenses.

”

Steven Sutherland



STRUCTURAL & ARCHITECTURAL DETAILERS

You Design it, We Model, Detail and Deliver your Drawings.

We are passionate about 3D Structural & Architectural Detailing, but this is not all we do!

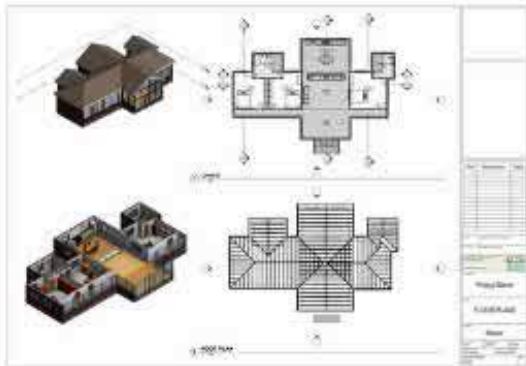


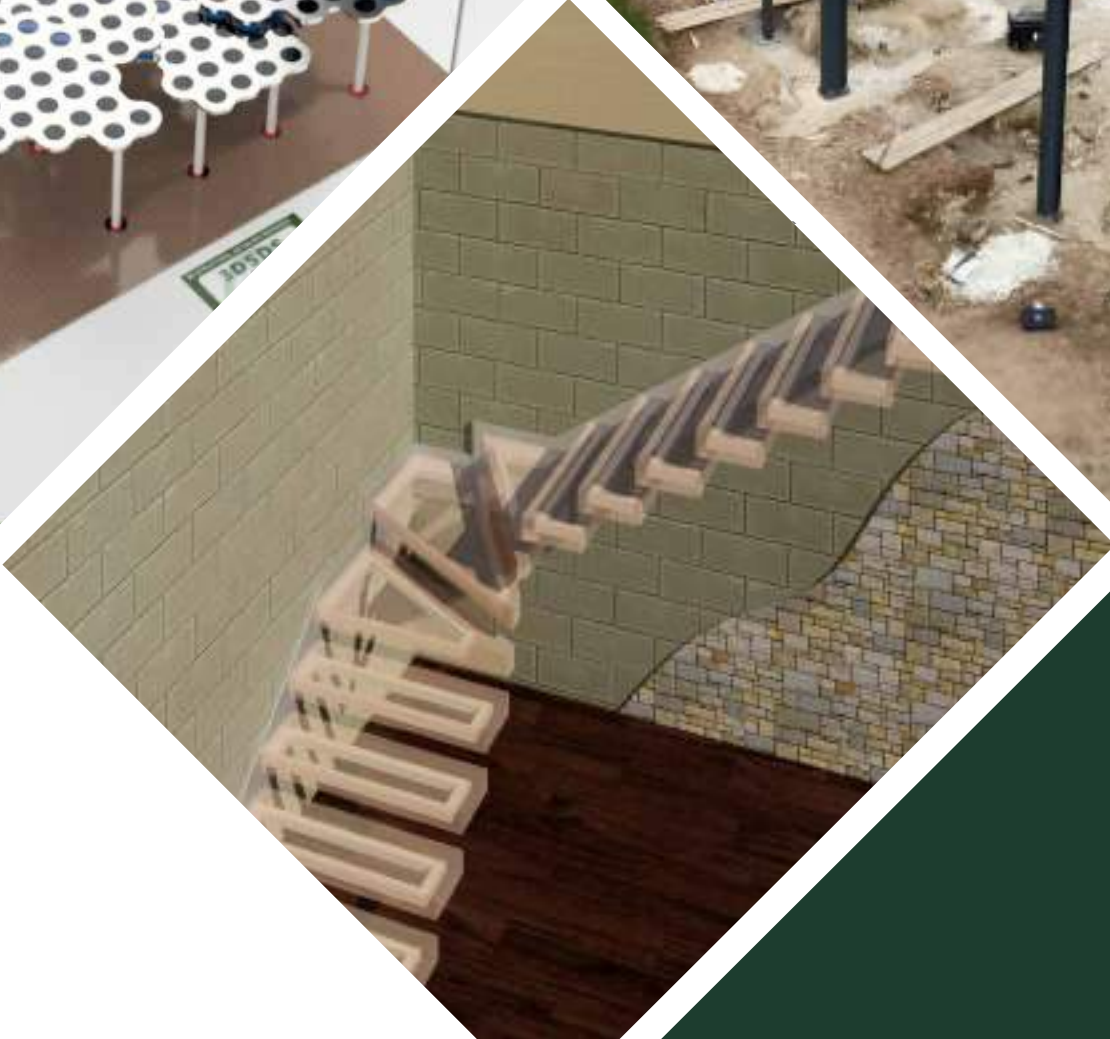
**SCAN ME
FOR MORE**

www.3dsds.co.uk

GET IN TOUCH TODAY!

enquiries@3dsds.co.uk | +44 (0) 74 8194 0018





3DSDS
3D Structural Detailing Services Limited