

Specification: Flexi®Range

Joint and crack repairs

hms
Specialist Surfacing

Our Flexi®Range services have been based on the proven Flexi®Joint system. The sealant is a specially blended polymer modified bituminous screed system incorporating SBS polymers, selected bitumens, process oils and extenders.

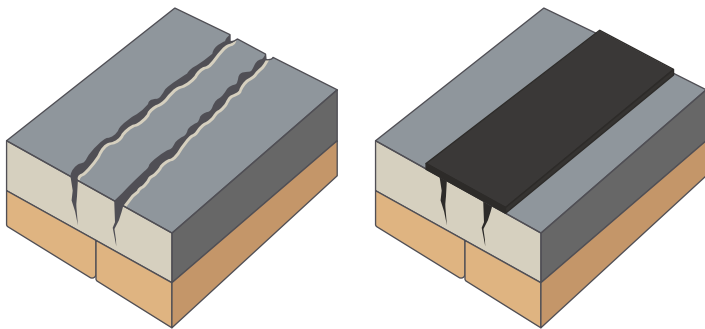
Combining a uniform distribution of chopped fibres and aggregates the Flexi®Range provides a stable and effective treatment to reflective cracking with improved elastomeric performance for easy and rapid application.

Flexi®Range provides various reflective crack, joint or pothole treatments, where the type of repair is chosen depending on the surface condition and locality. Once sealed further deterioration above or below the surface interlayers will be prevented,

subsequently reducing any further surface deterioration.

All of our Flexi®Range systems can be dressed with an aggregate finish, to produce a durable, non-reflective, high SRV finish.

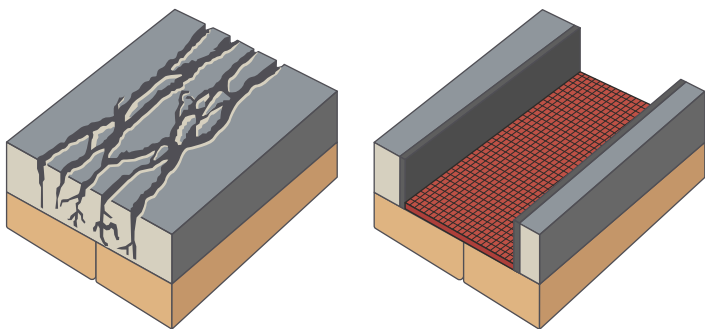
Flexi®Band



Preparation with the hot compressed air lance system cleans and dries the area, the Polymer Modified binder compound is then applied using a screed box.

Combining a uniform distribution of chopped fibres and aggregates the Flexi®Band system provides a stable and effective treatment to reflective cracking, with improved elastomeric performance for easy and rapid application.

Flexi®Joint



For repairs of greater depth, the versatile Flexi®Joint system adds stability. After excavation, the surfaces are cleaned and dried, a bitumen impregnated glass fibre gauze underlay is then put in place.

The filler is aggregate, thoroughly cleaned, heated and coated with the Polymer Modified sealant and compacted by a roller. A coating of the binder is then screeded across the area to provide a watertight seal, and surface dressed with a durable, non-reflective, high skid-resistant hot aggregate.



Benefits

Instantly seals against water ingress, preventing further surface damage.

Prolongs the surface life.

Vehicular traffic can use it instantly, meaning fewer road closures during busy commuter times.

Quick and easy to install.

Reduce costly resurfacing work.

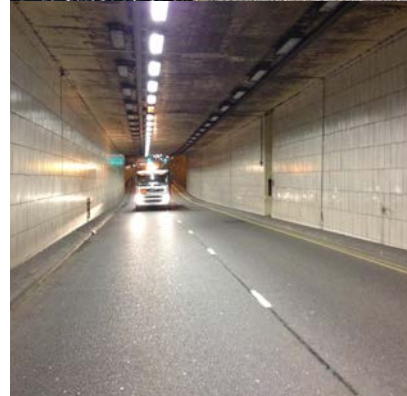
Works on both asphalt or concrete.

If you're not sure which Flexi®Range surface joint and crack treatment you need, simply contact us and one of our experts will visit your site. We will assess the surface damage and recommend the best course of action.

We wouldn't hesitate to recommend HMS

"HMS have been working with Leicester City Council for over 20 years' providing highways preventative maintenance services. All work is completed to an excellent standard, on time and within budget. What I especially like, is they arrange their own traffic management, meaning less hassle and few delays."

Prafull Shukla, Area Manager,
Leicester City Council



"They always go the extra mile to deliver."

Alice Stewardson,
Assistant Quantity Surveyor,
Danaher and Walsh



Get in touch

Visit www.hmslimited.co.uk for more information or call 01858 881111

HMS Specialist Surfacing

Unit 1, Evergreen Field Farm
Pincet Lane, North Kilworth, Leicestershire LE17 6NE

Care is taken to ensure that all information provided is accurate and up to date; however, HMS accepts no responsibility for inaccuracies or changes to information.

