



**GIBBSONN**

CREATIVE | SPACE | DESIGN

Introducing

**DG60**

Industrial Style Double Glazed  
Glass Partitioning System

[www.gibbsonn.com](http://www.gibbsonn.com)



# DG60

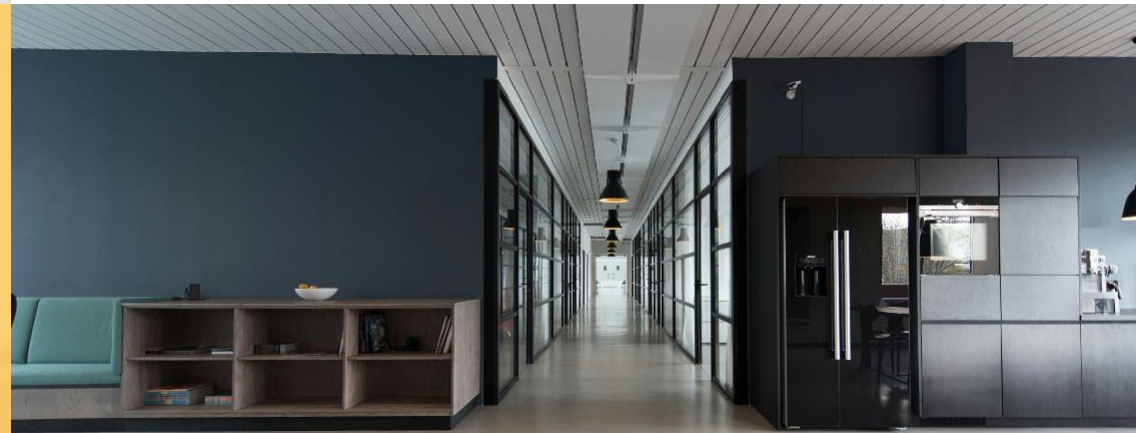
DISCOVER THE BENEFITS

- **Quick & simple to install**
- **Cost-effective**
- **Glass thicknesses from 6mm to 12.8mm**

Introducing the **DG60** Banded Industrial Style Partition by Smiths Building Systems. Crafted to embody the industrial aesthetic, these partitions blend form and function, which is ideal for modern workplaces seeking an industrial vibe.

## **Embrace Natural Light**

Foster a workspace that thrives on natural light, promoting productivity and well-being. Our DG60 Partitioning system effortlessly channels the sought-after banded glazing look, lending your office the trendy industrial room divider allure.



## **No Compromise**

While the primary goal of double glazed partitions is optimal acoustics, achieving the coveted banded glazing appearance has traditionally posed challenges. Not anymore. The DG60 system simplifies installation, allowing for swift vertical and horizontal banding integration, mimicking individual glass panels without hassle.

## **Bespoke Supply**

Say goodbye to lengthy installations. Our cost-effective DG60 system offers quick setup, and it's not just a one-size-fits-all solution. It accommodates various glass thicknesses, ensuring it can meet your acoustic needs precisely.



## Head & Wall

### DG60-HW

The innovative design of the new DG60 Head & Wall section allows for the installation of different glass types and thicknesses, enabling you to customize the acoustic rating of your fit-out according to your specific requirements and budget.

## Base Section

### DG60-BC

The new base section maintains the system's industrial aesthetic while being remarkably quick and easy to install. Like all profiles in the system, the base chair is designed to accommodate the internal installation of gaskets in various sizes to suit your glass requirements.

## Banded Glazing

### DG60-BGT

The banded glazing profile is designed to seamlessly integrate with and mirror the internal structure of the DG60 system, creating the appearance of individual panes of glass when installed.

## Mullion Posts

### DG60-MP

The new and improved mullion post is designed for quick and easy installation. It not only allows you to create a solid internal framework for banded glazing but also provides additional support for structures over 2700mm in height, preventing any glass deflection.

## Door Frames

### DG60-DF

The new double-glazed door frame is engineered with ample aluminum for exceptional structural strength, allowing you to install glass doors, timber doors, and the Smiths Ultima aluminum-framed glazed door. It can also be easily machined to accommodate a variety of hinge options and is designed to integrate seamlessly with our new transition post.

## Acoustics

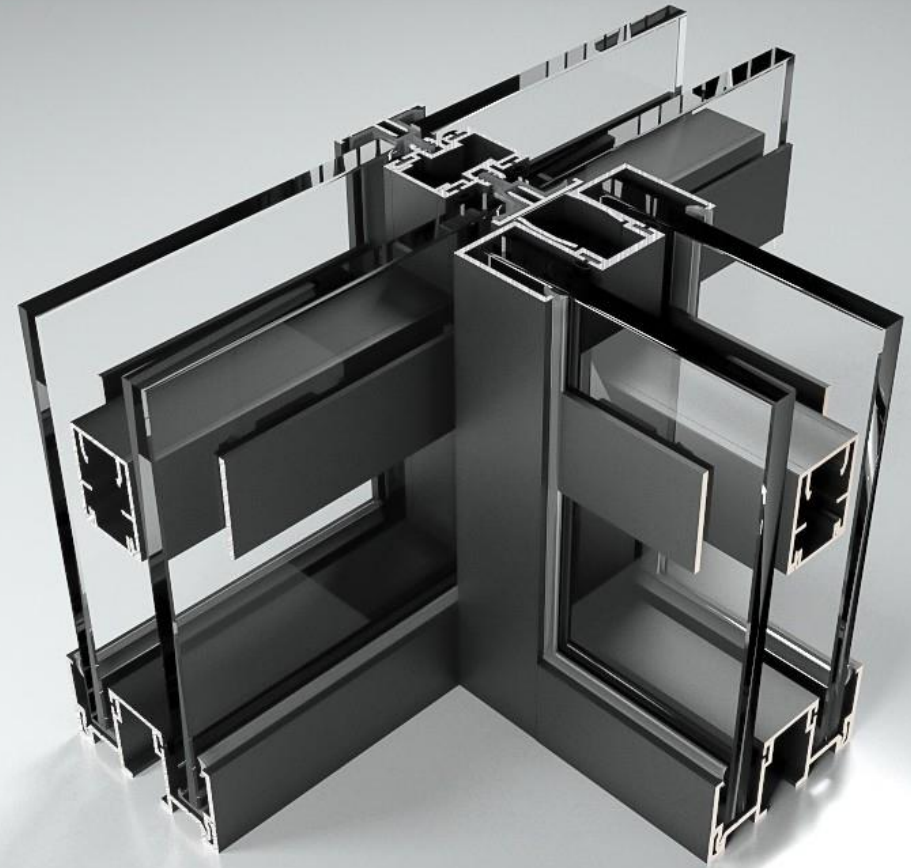
In test environments, the DG60 double-glazed system is capable of achieving a maximum acoustic rating of 50dB.

## Glass

The new DG60 system offers the flexibility to use a variety of glass thicknesses, ranging from 6mm to 12.8mm.

## Finishes

Available as standard in Black RAL9005, Grey RAL9006, White RAL9010, Anthracite Grey RAL7016 & mill finish. Other finishes are available upon request.



# DG60

## TECHNICAL SPECIFICATIONS



# DG60

TRANSITION POSTS

## Transition Post

### DG60-TP

Our new transition post is a valuable addition to the system, enabling quick installation of glass partitioning within 70mm drywall systems. The profile is designed for compatibility with the entire DG60 system and can be used in door frame installations, glass installations, and 90-degree junctions.



**GIBBSONN**  
CREATIVE | SPACE | DESIGN

## About Us

We specialise in the supply of demountable partitioning and door systems for commercial office fit-outs. We not only provide innovative products but also comprehensive aftersales support.



**GIBBSONN**

CREATIVE | SPACE | DESIGN

Unit H, Suite 5 & 6 Woodside Industrial  
Estate, Peek Business Centre, Bishop's  
Stortford, CM23 5RG

Telephone: **07972 263030**

Email: [Info@Gibbsonn.com](mailto:Info@Gibbsonn.com)

Website: [www.gibbsonn.com](http://www.gibbsonn.com)

