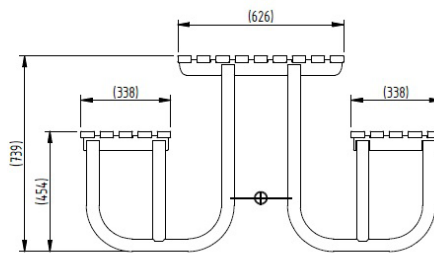
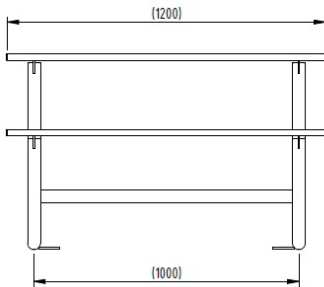




# Weldon Picnic Table 1200mm

## Galvanised, Galvanised & Colour or Stainless



With a simple and traditional design, the Weldon Picnic Table from AUTOPA is perfect for use in busy public spaces like schools, parks and playgrounds. Manufactured from galvanised mild steel, this robust range will complement any site, looking good for many years with only minimal maintenance.

The Weldon Picnic Table is supplied in galvanised mild steel, or stainless steel. Galvanised and powder coated is an optional extra (RAL number must be stated at time of order).

Available bolt down only.



Part Number	Description	Weight (kg)
138 117 125	Weldon Picnic Table, Galvanised - Bolt Down	98kg
138 117 126	Weldon Picnic Table, Galvanised & Colour - Bolt Down	98kg
138 117 127	Weldon Picnic Table, Stainless Steel Grade 304 - Bolt Down	85kg

### Product details

- Table - 1200mm x 626mm x 739mm (length x width x height)
- Seat - 1200mm x 338mm x 454mm (length x width x height)
- Overall width - 1302mm
- Galvanised/galvanised & coated finish complete with plastic end caps
- Each picnic table requires 4 x 12mm bolts

### Installation & use

Supplied fully welded for easy installation on site.

Bolt down versions require bolting to an appropriate concrete surface by means of 12mm bolts.

Concrete in versions require an excavated hole for installation.

Clean off any concrete splashes after installation. Always allow sufficient time for concrete to cure before usage.

These products are guaranteed for 12 months (if installed and used correctly).



[www.autopa.co.uk](http://www.autopa.co.uk)  
+44 (0)1788 550556

AUTOPA Limited  
Cottage Leap, Rugby, Warwickshire CV21 3XP

